



# Fieldbus Indicators and Displays

for use in **hazardous**

and **safe areas**

**NOW**  
**FF ITK 6**  
compliant



**Zone 1 & 2  
Gas & Dust  
Certified**

visit our website [www.beka.co.uk](http://www.beka.co.uk)

- > **Fieldbus Indicators**  
5 digit 20mm high LCD digits with a 31 segment bargraph
- > **Fieldbus Displays**  
Graphical display which can show up to 8 variables



# Process visualisation...

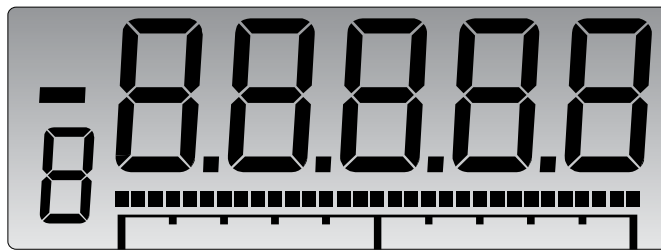
## conventional to **Fieldbus**

BEKA associates manufacture the most extensive range of site proven bus powered fieldbus indicators and displays for both FOUNDATION™ fieldbus and PROFIBUS PA protocols. Featuring large easy to read displays there is a model for most safe and hazardous area applications.

### FIELDBUS INDICATORS

Economic single variable and versatile eight variable indicators have bold 5 digit 20mm high characters plus 31 segment analogue bargraphs. The 8 variable models show one variable at a time and may be configured as a fieldbus node or as a fieldbus listener. When configured as a node the indicator's push buttons may be used for sending operator requests to the system host.

FOUNDATION™ fieldbus	PROFIBUS PA	
<b>Single variable - ITK 6 compliant</b>		
BA414DF-F	—	Field mounting intrinsically safe
BA414NDF-F	—	Field mounting Type n for Zone 2
BA418CF-F	—	Panel mounting intrinsically safe
BA614DF-F	—	Field mounting for safe area
BA618CF-F	—	Panel mounting for safe area
<b>8 variables displayed one at a time - FF models ITK 5</b>		
BA444DF-F	BA444DF-P	Field mounting intrinsically safe
BA444NDF-F	BA444NDF-P	Field mounting Type n for Zone 2
BA448CF-F	BA448CF-P	Panel mounting intrinsically safe
BA644DF-F	BA644DF-P	Field mounting for safe area
BA648CF-F	BA648CF-P	Panel mounting for safe area



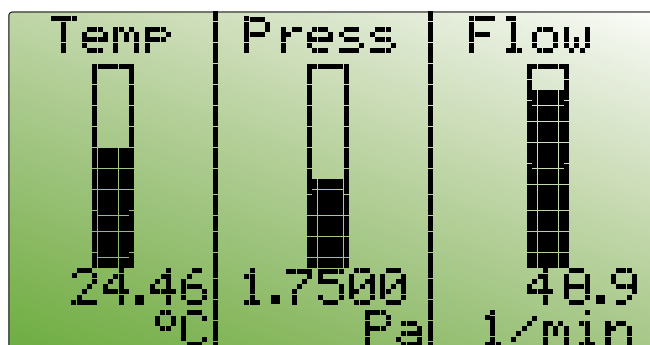
Fieldbus indicator digits shown full size

### FIELDBUS DISPLAYS

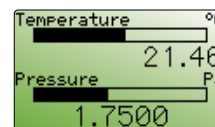
Simultaneously display up to 8 process variables on a 120 x 64 pixel backlit screen. Selectable formats include 1, 2, 3, 4 or 8 variables per screen, some with bargraphs, units of measurement and variable identifications. Options include local alarm outputs configured via the instrument's push buttons that can each switch a separately powered load such as a sounder or a beacon.

PROFIBUS PA models can send operator requests to the system host via the instrument push buttons or external switches.

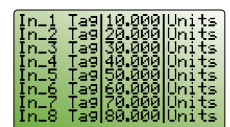
FOUNDATION™ fieldbus	PROFIBUS PA	
<b>Up to 8 variables displayed simultaneously - FF models ITK 6 compliant</b>		
BA484DF-F	BA484DF-P	Field mounting intrinsically safe
BA488CF-F	BA488CF-P	Panel mounting intrinsically safe
BA684DF-F	BA684DF-P	Field mounting for safe area
BA688CF-F	BA688CF-P	Panel mounting for safe area



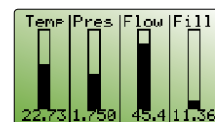
One of eleven selectable screens shown full size



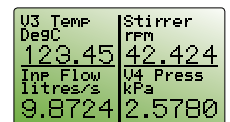
Two variables + horizontal bargraphs



Eight variables

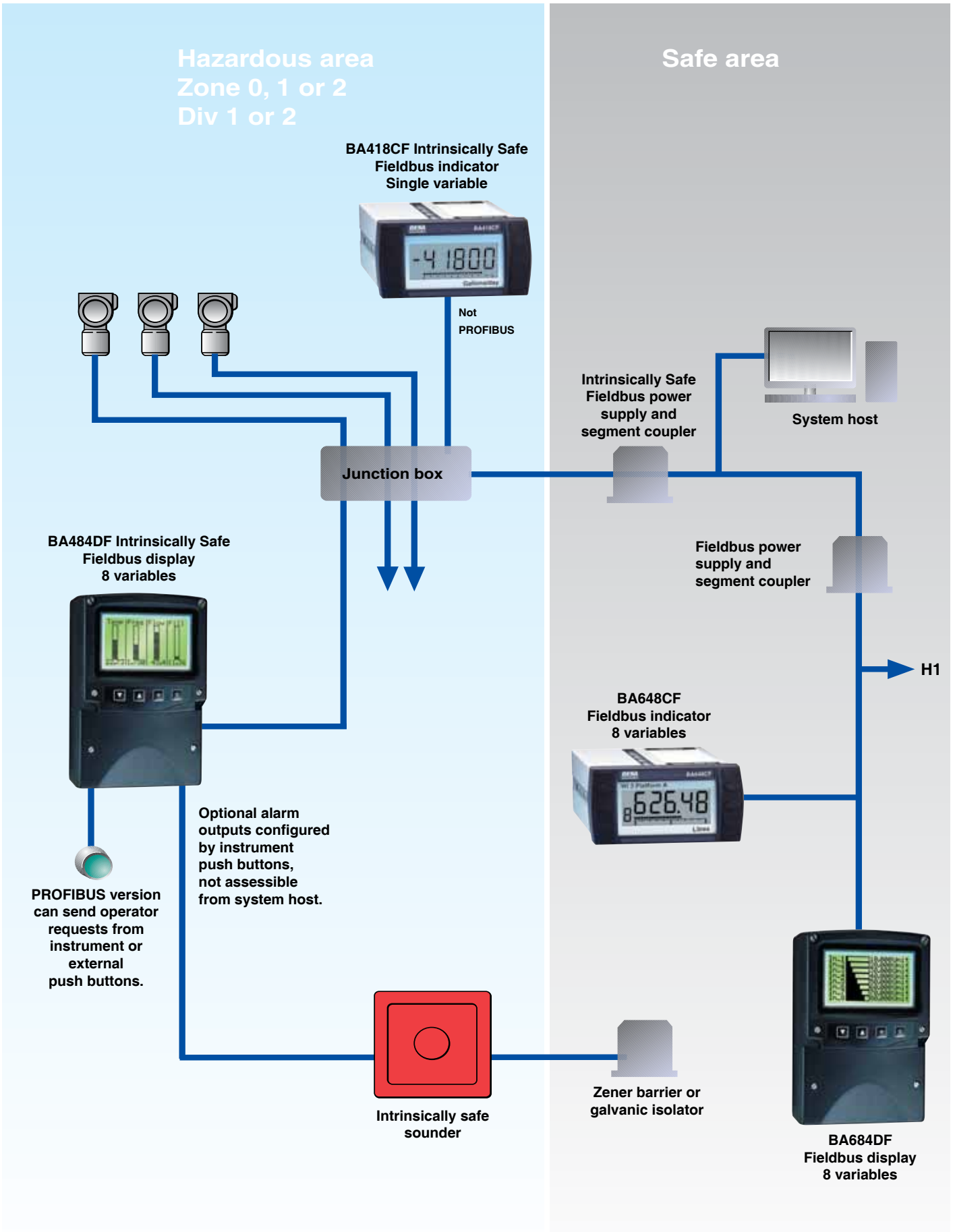


Four variables + vertical bargraphs



Four variables

## Typical application





## Models available

Model No.	Mounting	Variables	Protocol	Certification					
				Europe ATEX		International IECEx		USA & Canada	
				Gas	Dust	Gas	Dust	Gas	Dust

### Ex ia & Ex ic intrinsically safe - for use in Zones 0, 1 & 2 and 20, 21 & 22 where certified

#### INDICATORS

BA414DF	Field	1	FF ITK 6 compliant	✓	✓	✓	✓	✓	✓
BA444DF Node or Listener	Field	8	FF or Profibus PA	✓	✓	✓	✓	✓	✓
BA418CF	Panel	1	FF ITK 6 compliant	✓	–	✓	–	✓	–
BA448CF Node or Listener	Panel	8	FF or Profibus PA	✓	–	✓	–	✓	–

### Ex ia intrinsically safe - for use in Zones 0, 1 & 2 and 20, 21 & 22 where certified

#### DISPLAYS

BA484DF	Field	8	} FF ITK 6 compliant or Profibus PA	✓	✓	✓	✓	✓	✓
BA488CF	Panel	8		✓	–	✓	–	✓	–

### Ex nL & Ex tD - for use in Zones 2 and 22 without Zener barriers or galvanic isolators. Only for legacy applications

#### INDICATORS

BA414NDF	Field	1	FF ITK 6 compliant	✓	✓	✓	✓	–	–
BA444NDF Node or Listener	Field	8	FF or Profibus PA	✓	✓	✓	✓	–	–

### General Purpose - for use in safe areas

#### INDICATORS

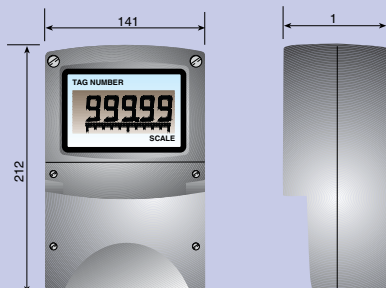
BA614DF	Field	1	FF ITK 6 compliant
BA644DF Node or Listener	Field	8	FF or Profibus PA
BA618CF	Panel	1	FF ITK 6 compliant
BA648CF Node or Listener	Panel	8	FF or Profibus PA

#### DISPLAYS

BA684DF	Field	8	} FF ITK 6 compliant or Profibus PA
BA688CF	Panel	8	

## Dimensions

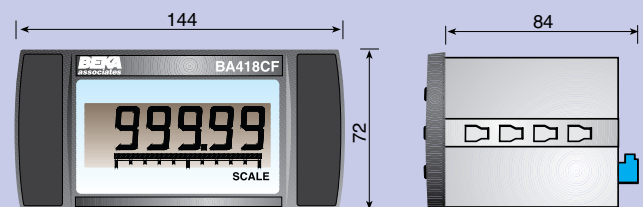
### FIELD MOUNTING MODEL



Operating temperature **-20 to +60°C**  
Some models have wider range see datasheet

Enclosure GRP **IP66**

### PANEL MOUNTING MODEL



Operating temperature **-20 to +60°C**  
Some models have wider range see datasheet

Enclosure **Front IP66 rear IP20**

## BEKA associates Ltd

Old Charlton Road, Hitchin, Hertfordshire SG5 2DA England  
Telephone +44 (0) 1462 438301 Fax +44 (0) 1462 453971

www.beka.co.uk  
e-mail: sales@beka.co.uk