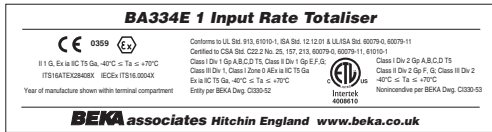


1. DESCRIPTION

The BA334E is a field mounting intrinsically safe, one input Rate Totaliser with a separate terminal compartment which will function with a wide variety of sensors. The instrument can display rate of flow and total flow in the same or different engineering units.

This abbreviated instruction sheet is intended to assist with installation, a comprehensive instruction manual describing safety certification, system design and configuration may be downloaded from the BEKA website or may be requested from the BEKA sales office.

The BA334E Rate Totaliser has IECEx and ATEX intrinsic safety certification for use in flammable gas atmospheres, plus ETL and cETL gas and dust certification. The certification information label, which is located on the top of the instrument assembly, shows the certification numbers and codes. Other certifications may be shown. Copies of certificates may be downloaded from the BEKA website.

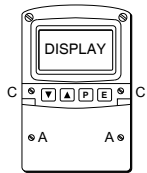


Typical certification information label

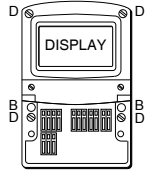
2. INSTALLATION

The BA334E Rate Totaliser has a robust IP66 GRP enclosure with a separate terminal compartment incorporating an armoured glass window & stainless steel fittings. It is suitable for exterior surface mounting in most industrial environments, or pipe mounting using an accessory kit.

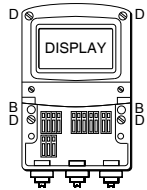
If the enclosure is not bolted to an earthed post or structure, the earth terminal should be connected to local earthed metalwork or to the plant's potential equalising conductor.



Step A
Remove the terminal cover by unscrewing the two 'A' screws



Step B
Secure the instrument to a flat surface with M6 screws through the two 'B' holes.
Alternatively use a pipe mounting kit.



Step C and D
Remove the temporary hole plug and install an appropriate IP rated cable gland or conduit fitting and terminate field wiring. Finally replace the terminal cover and tighten the two 'A' screws.

Fig 1 BA334E installation procedure

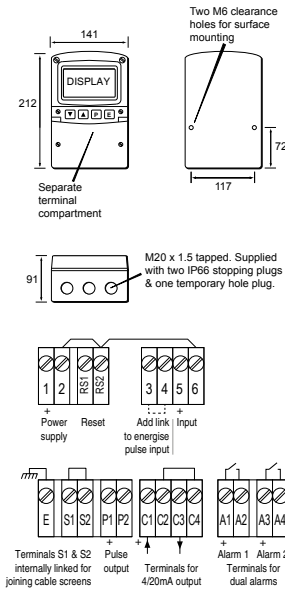


Fig 2 Dimensions and terminal connections

EMC

For specified immunity all wiring should be in screened twisted pairs with screens earthed at one point within the safe area.

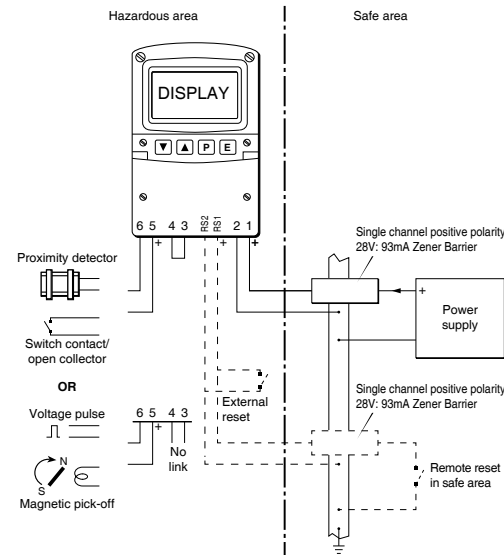


Fig 3 Typical measurement loop

Units of measurement and tag number

The BA334E is fitted with a blank escutcheon around the liquid crystal display. This can be supplied printed with any units of measurement and tag information specified at the time of ordering. Alternatively, the information may be added on-site via an embossed strip, dry transfer or a permanent marker.

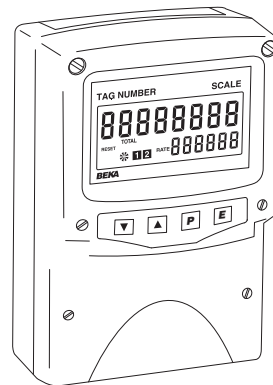
To gain access to the escutcheon remove the terminal cover by unscrewing the two 'A' screws which will reveal two concealed 'D' screws. Remove the push buttons by unscrewing the two 'C' screws and un-plug the five way connector. Finally, unscrew all four 'D' screws and carefully lift off the front of the instrument. The location of all the screws is shown in Fig 1.

3. OPERATION

The BA334E is controlled and configured via four front panel push buttons. In the display mode i.e. when the instrument is displaying flow the push button functions are:

- [E] + [V] Grand total - shows L₀ followed by least significant 8 digits of the 16 digit grand total.
- [E] + [A] Grand total - shows H₁ followed by the most significant 8 digits of the 16 digit grand total. If Local Grand Total Reset [Lr GtRt] in the instrument configuration menu has been activated, operating the [E] and [A] buttons for ten seconds will result in [Lr. n0] being displayed with the no flashing. Operating the [V] or [A] button will change the display to [Lr. n0], the [E] button will then reset the grand total to zero which will be confirmed by a brief display of [Lr. 0].
- [V] + [A] If Local Total Reset [Lr Tot] in the instrument configuration menu has been activated, operating the [V] and [A] buttons for three seconds will reset the total display to zero and clear any pulses stored in the pulse output. The Grand Total is not reset.
- [P] + [V] Shows in succession, firmware version number, instrument function [Lr. n0], 5E and output accessories which are always fitted.
 - R Control outputs
 - P Pulse output
 - C 4/20mA output
- [P] + [A] Provides direct access to the alarm setpoints when the Rate Totaliser is fitted with optional alarms and the [Lr SP] setpoints function has been enabled.
- [P] + [E] Access to configuration menu

Abbreviated Instruction for BA334E intrinsically safe field mounting Rate Totaliser



Issue 1
1st March 2017

BEKA associates Ltd. Old Charlton Rd, Hitchin, Hertfordshire, SG5 2DA, UK
Tel: +44(0)1462 438301 Fax: +44(0)1462 453971
e-mail: sales@beka.co.uk web: www.beka.co.uk

The BA334E is CE marked to show compliance with the ATEX Directive 2014/34/EU and the EMC Directive 2014/30/EU.

4. CONFIGURATION

Rate Totalisers are supplied configured as requested at time of ordering, if not specified default configuration will be supplied but can easily be changed on-site. Fig 4 shows the location of each function within the configuration menu with a brief summary of the function. Please refer to the full instruction manual for detailed configuration information. Access to the configuration menu is obtained by pressing the **[P]** and **[E]** buttons simultaneously. If the Rate Totaliser's security code is set to default 0000 the first parameter **FunCtion** will be displayed. If the instrument is protected by a security code, **[odE]** will be displayed. The four digit code must be entered to gain access to the menu.

Unless otherwise specified menu functions are shown on the upper display

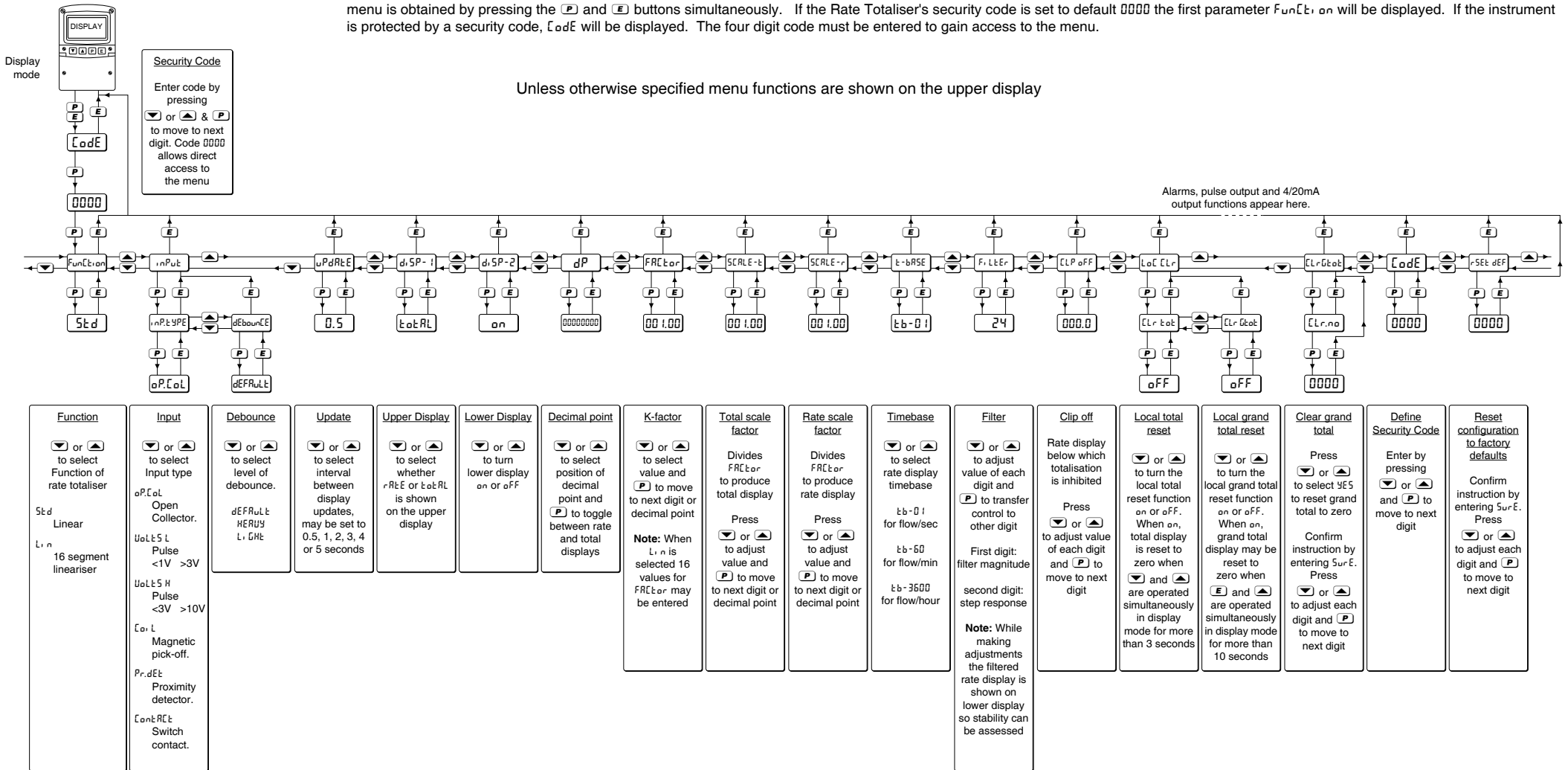


Fig 4 Configuration menu



Manuals and datasheets can be downloaded from <http://www.beka.co.uk/ba334e>

BEKA associates

Old Charlton Rd, Hitchin, Hertfordshire, SG5 2DA, UK
 Tel: +44(0)1462 438301 Fax: +44(0)1462 453971
 e-mail: sales@beka.co.uk web: www.beka.co.uk