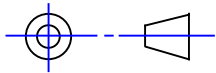


Iss.	Date	Modification	Appd.
1	09.06 2017	.	
2	02.08 2019	IP66 note was IP65, White added CRN 1801.	

BEKA associates
Hitchin England
company confidential, copyright reserved.



THIRD ANGLE PROJECTION

DIMENSIONS IN mm

DO NOT SCALE

LAMP DETAILS:

LENS (POLYCARBONATE)

SEALING WASHER (NITRILE)

LOCKING RING

KEYWAY

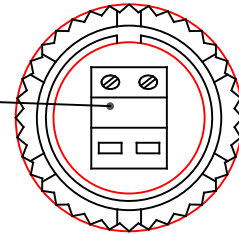
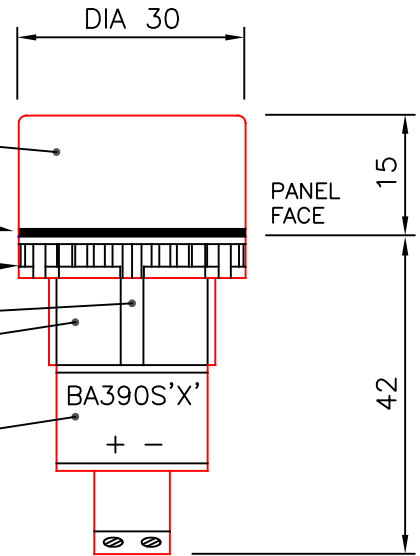
BODY (POLYAMIDE)

LABEL WITH CERTIFICATION INFORMATION AND MODEL NUMBER:

'X' IDENTIFIES LAMP COLOUR:

A - AMBER
B - BLUE
G - GREEN
R - RED
W - WHITE
S - SPECIAL

TERMINALS (1.5mm)



PANEL CUTOUT:

DIAMETER 22.5 ± 0.2

SPACING: (VERTICAL x HORIZONTAL)

LAMPS ONLY 31 x 31 min.

WITH LEGEND PLATES 47 x 31 min.

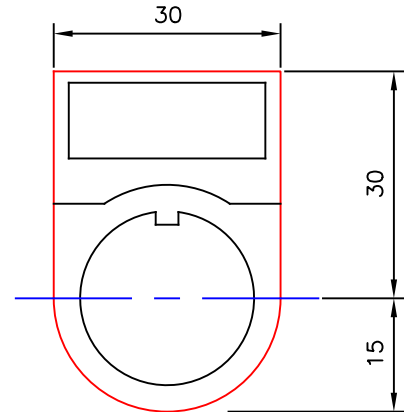
INSTALLATION:

- 1 REMOVE LOCKING RING FROM LAMP
- 2 INSERT LAMP FROM FRONT OF PANEL
- 3 RE-FIT LOCKING RING FROM REAR OF PANEL. ENSURE KEYWAY FACES TOP OF LAMP

NOTE:

CORRECT INSTALLATION WILL PROVIDE IP66 PROTECTION FRONT OF PANEL

LEGEND PLATE DETAILS:



Title
CUSTOMER DRAWING for
**BA390S LOW CURRENT LED
CLUSTER LAMP**

Drawn
RH

Checked

Scale
NTS

Drawing No.