

BA488CF-F

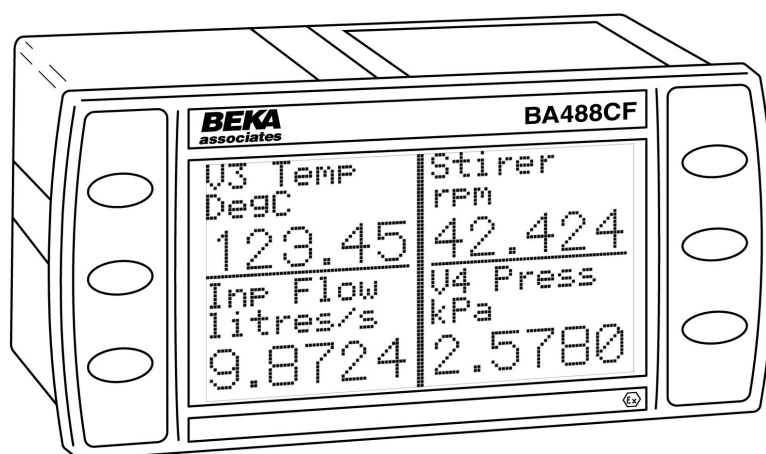
FOUNDATION™ fieldbus

Intrinsically safe

Panel mounting display

Issue 17

For version 3 instruments with
revision 4.03 firmware



CONTENTS

1. Description

- 1.1 Documentation
- 1.2 Version 4.03 firmware

2. Operation

- 2.1 Controls

3. Intrinsic Safety Certification

- 3.1 ATEX & UKEX certification
- 3.2 Zones, gas groups and T rating
- 3.3 Fieldbus connection
- 3.4 External switches
- 3.5 Alarm outputs
- 3.6 Certification label information

4. System Design for Hazardous Area

- 4.1 FISCO Systems
- 4.2 Non FISCO Systems
- 4.3 External switches
- 4.4 Alarm outputs

5. Installation

- 5.1 Location
- 5.2 Installation procedure
- 5.3 EMC

6. Configuration

- 6.1 Display transducer block
- 6.2 Screen selection and alarm configuration.
- 6.3 Default configuration
- 6.4 Accessing instrument configuration menu.
- 6.5 Screen selection
- 6.6 Alarm configuration
 - 6.6.1 Alarm summary
 - 6.6.2 Alarm activation
 - 6.6.3 Alarm output
- 6.7 Display configuration
 - 6.7.1 Settings
 - 6.7.2 Quick access
 - 6.7.3 Access code
 - 6.7.4 Status text
 - 6.7.5 Last input
 - 6.7.6 Keys
 - 6.7.7 Code
 - 6.7.8 Unit info
 - 6.7.9 Defaults
 - 6.7.10 Display defaults
 - 6.7.11 Interface board defaults
- 6.8 Quick access menu

7. Maintenance

- 7.1 Fault finding during commissioning
- 7.2 Fault finding after commissioning
- 7.3 Servicing
- 7.4 Routine maintenance
- 7.5 Guarantee
- 7.6 Customer comments

8. Accessories

- 8.1 Tag number
- 8.2 FOUNDATION™ fieldbus Interface Guide.

Appendix 1

FM Approval for use in the USA

Appendix 2

IECEX certification

Appendix 3

EU Declaration of Conformity

The BA488CF-F is CE marked to show compliance with the European Explosive Atmospheres Directive 2014/34/EU and the European EMC Directive 2014/30/EU.

It is also UKCA marked to show compliance with UK statutory requirements Equipment and Protective Systems Intended for Use in Potentially Explosive Atmospheres Regulations UKSI 2016:1107 (as amended) and with the Electromagnetic Compatibility Regulations UKSI 2016:1091 (as amended).

1. DESCRIPTION

The BA488CF-F FOUNDATION™ fieldbus display is an intrinsically safe instrument that can display up to eight FOUNDATION™ fieldbus process variables, together with their units of measurement and tag information. The instrument is bus powered so no additional power supply is required.

The instrument's communications protocol is shown on the rear panel. The '-F' order code suffix also indicates the protocol but is not shown on the instrument certification label. There is an alternative version of the fieldbus display, order code BA488CF-P for use on Profibus PA networks.

This instruction manual describes revision 3 BA488CF-F Foundation fieldbus displays which were introduced in January 2019. Revision 3 displays have been verified in the FieldComm Labs as compliant with ITK 6.3.

Instruction manuals for the earlier revision 1 and 2 instruments may be downloaded from the superseded documentation section of the BEKA website.

Most of the BA488CF-F display parameters are configured on-site via the fieldbus. Screen format selection and alarm configuration is performed using an internal menu and the instrument's front panel push buttons.

Up to eight process variables can be displayed using the two Input Selector function blocks.

The required Device Description files, which may be downloaded from either the FieldComm or the BEKA websites, depend upon which BA488CF-F FOUNDATION™ fieldbus display revision is selected.

Eleven selectable standard display screen formats enable one, two, three, four or eight process variables, some with bargraphs to be displayed on one screen.

The BA488CF-F FOUNDATION™ fieldbus display can be supplied with six optional alarm outputs that may be linked to any of the displayed fieldbus variables. These alarm outputs are locally activated from the fieldbus variables and are configured via the instrument menu and push buttons. They cannot be controlled via the fieldbus.

The BA488CF-F has ATEX & UKEX certification for use in gas atmospheres. It carries the EU community CE mark and the UKCA mark. Subject to local codes of practice it may be installed in any of the European Economic Area (EEA) member countries and in the UK.

For use in the USA the instrument has intrinsic safety and nonincendive FM Approval – see Appendix 1, plus IECEx intrinsic safety approval for international applications – see Appendix 2.

Housed in a robust 72 x 144 panel mounting DIN enclosure, the BA488CF-F FOUNDATION™ fieldbus display has an IP66 front panel and is supplied with a gasket to seal the joint between the instrument and the panel.

1.1 Documentation

This instruction manual describes system design, conditioning and installation of the BA488CF-F FOUNDATION™ fieldbus display. For detailed commissioning information please refer to the FOUNDATION™ fieldbus Interface Guide that can be downloaded from the BEKA website www.beka.co.uk

1.2 Version 4.03 Firmware

Updated firmware was released in January 2019 which includes the following key features:

- 11 standard screens

- Multiple bargraph limits

- Individual input scaling

- Two 4-input Input Selector function blocks:

- Last variable parameter prevents display of unused inputs.

- Fieldbus compliance verified to ITK 6.3

- Option added to remove status text from single variable screens.

The instrument's firmware version can be established using the 'Unit Info' function in the main configuration menu – see section 6.7.8 of this manual.

2. OPERATION

Fig 1 shows a simplified block diagram of the BA488CF-F FOUNDATION™ fieldbus display. When the optional alarms are not fitted, the instrument only requires a two-wire connection to the fieldbus.

Parameters that cannot be configured via the fieldbus can be configured via the four front panel push buttons. Menus enable the required standard display screen format to be selected.

The optional alarms are locally activated from the fieldbus variables and can only be configured and the setpoints adjusted using the BA488CF-F push buttons. The alarms cannot be configured or controlled via the fieldbus.

Description Files for the BA488CF-F FOUNDATION™ fieldbus display may be downloaded from either the FieldComm or from the BEKA associates websites.

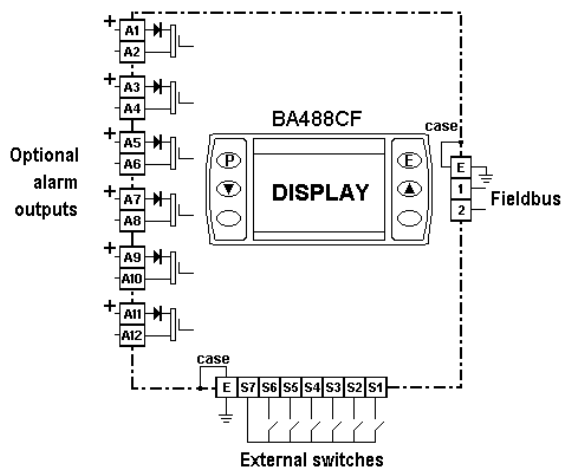


Fig 1 Simplified block diagram of BA488CF-F

2.1 Controls

The user can scroll through the display screens by operating the ▼ or ▲ push buttons. The number of screens available depends upon how the BA488CF-F display has been configured. If one fieldbus variable per screen has been configured, eight screens will be present; if four fieldbus variables per screen have been configured, only two screens will be available.

Irrespective of the number of fieldbus variables assigned to the BA488CF-F, the instrument always has provision for displaying eight variables. Unassigned inputs are displayed as zero with a bad data warning i.e. light digits on a dark background. The Last Input parameter allows unused inputs to be skipped when scrolling through the instrument display screens, see section 6.7.5.

If enabled, operating the **P** and ▲ push buttons simultaneously activates the Quick Access Menu, allowing the user to adjust the display contrast without providing access to any of the other configuration parameters. Additional security may be provided by an optional access code.

3. INTRINSIC SAFETY CERTIFICATION

3.1 ATEX & UKEX certification

The BA488CF-F has ATEX & UKEX certification for use in gas atmospheres. It carries the EU community CE mark and the UKCA mark. Subject to local codes of practice it may be installed in any of the European Economic Area (EEA) member countries and in the UK.

This manual describes ATEX & UKEX installations in explosive gas atmospheres which conform with EN 60079-14 *Electrical installation design, selection and erection*. When designing systems for installation the local Code of Practice should be consulted.

3.2 Zones, gas groups and T rating

The BA488CF-F has Group II Category 1G Ex ia IIC T4 Ga (Tamb -40 to 60°C) apparatus certification. When connected to a suitable system the BA488CF-F may be installed in:

Zone 0	explosive gas air mixture continuously present.
Zone 1	explosive gas air mixture likely to occur in normal operation.
Zone 2	explosive gas air mixture not likely to occur, and if it does will only exist for a short time.

Be used with gases in groups:

- Group A propane
- Group B ethylene
- Group C hydrogen

Having a temperature classification of:

T1	450°C
T2	300°C
T3	200°C
T4	135°C

At an ambient temperature between -40 and +60°C.

Note: the guaranteed operating temperature range of the Fieldbus Display is -20 to +60°C

This allows the BA488CF-F to be installed in all Zones and to be used with most common industrial gases.

Special conditions for safe use in Zone 0

In the unlikely event of installation in a Zone 0 potentially explosive atmosphere, the BA488CF-F FOUNDATION™ fieldbus display shall be installed such that even in the event of rare incidents, an ignition source due to impact or friction between the aluminium enclosure at the rear of the instrument mounting panel and iron/steel is excluded.

3.3 Fieldbus connection

The BA488CF-F FOUNDATION™ fieldbus display is powered and communicates via the fieldbus, which is connected to terminals 1 and 2. These terminals comply with the Fieldbus Intrinsically Safe Concept (FISCO) defined in IEC 60079-11 which simplifies intrinsic safety system design.

The BA488CF-F may also be connected to non FISCO compliant fieldbus segments by using the entity concept to assess safety.

Terminals 1 and 2 of the BA488CF-F FOUNDATION™ fieldbus display are not polarised and have the following safety parameters:

Ui	=	17.5V dc
Ii	=	380mA dc
Pi	=	5.32W

For non FISCO compliant segments, the safety parameters of the power supply or isolator powering the fieldbus segment must be equal to or less than these figures.

The maximum equivalent capacitance and inductance at terminals 1 & 2 of the BA488CF-F Fieldbus Display are:

Ci	=	1nF
Li	=	8µH

To determine cable parameters for non FISCO compliant segments, the sum of Ci and Li of all the field devices should be subtracted from the maximum cable parameters permitted by the device powering the fieldbus segment.

3.4 External switches

For applications requiring operator inputs to be made by large industrial push buttons, terminals S1 to S7 facilitate external switches to be connected to the Fieldbus Display. When external switches are connected, the BA488CF-F may be configured so that the front panel push buttons continue to function or are disabled.

Terminals S1 to S7 have the following combined output safety parameters:

$$\begin{aligned}U_o &= 14.7V \text{ dc} \\I_o &= 146.7mA \text{ dc} \\P_o &= 0.58W\end{aligned}$$

The switches and associated wiring connected to the terminals must comply with the requirements for *simple apparatus*. i.e. the switch must be mechanically activated and have IP20 protection, and both the switch and the wiring must be capable of withstanding a 500V rms insulation test to earth for one minute. Most industrial push buttons and wiring satisfy these requirements.

The input safety parameters of terminals S1 to S7 are zero, therefore only switches or intrinsically safe relays may be connected.

The total maximum permitted cable parameters for all the cables connected to terminals S1 to S7 in a IIC hydrogen gas must be less than:

$$\begin{aligned}C_o &= 0.22\mu F \\L_o &= 0.26mH\end{aligned}$$

Although these parameters are not restrictive, for reliable operation it is recommended that the cables between the fieldbus display and the external push buttons are less than 5m long.

3.5 Alarm outputs

Each of the six optional alarm outputs is a separate galvanically isolated solid state switch. The EC-Type Examination Certificate specifies that under fault conditions the voltage, current and power at each switch output will not exceed those specified for *simple apparatus* in EN 60079-11. This allows each of the BA488CF-F alarm outputs to be connected to any intrinsically safe circuit protected by a certified Zener barrier or galvanic isolator providing that the output parameters of each circuit are less than:

$$\begin{aligned}U_o &= 28V \text{ dc} \\I_o &= 200mA \\P_o &= 0.84W\end{aligned}$$

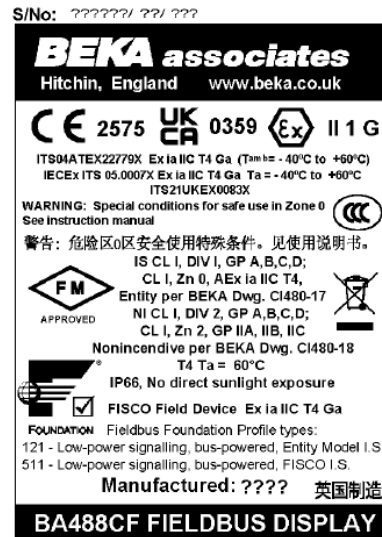
The maximum equivalent capacitance and inductance of each BA488CF-F alarm output is:

$$\begin{aligned}C_i &= 40nF \\L_i &= 20\mu H\end{aligned}$$

To determine the maximum permissible cable parameters, C_i and L_i should be subtracted from the maximum cable capacitance and inductance specified for the circuit connected to the switch.

3.6 Certification Label Information

The certification label is fitted in a recess on the top outer surface of the enclosure. It shows the IECEx, ATEX & UKEX certification information, a statement that the instrument is a FISCO Field Device, plus BEKA associates name and location. Non European certification information may also be included.

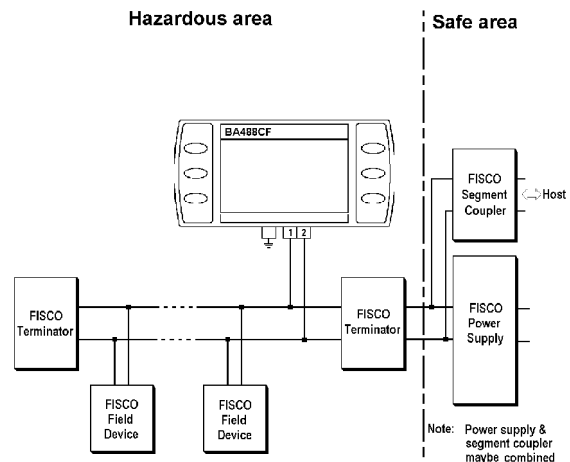


4. SYSTEM DESIGN FOR HAZARDOUS AREAS

4.1 FISCO Systems

The BA488CF-F FOUNDATION™ fieldbus display may be connected to any FISCO compliant fieldbus segment providing that the power supply or isolator powering the segment can provide 25mA required by the BA488CF-F Display.

Fig 2 shows a typical fieldbus segment. To comply with FISCO requirements, the power supply, terminators, field devices and the interconnecting cables must conform with EN 60079-11.



4.2 Non FISCO Systems

Fig 2 FISCO fieldbus system

If the BA488CF-F FOUNDATION™ fieldbus display is to be connected to a fieldbus segment that does not comply with FISCO requirements, the safety parameters of the power supply and the BA488CF-F must be compared using the entity concept.

The maximum output safety parameters of the device powering the fieldbus segment must be equal to, or less than, the input safety parameters of terminals 1 & 2 of the BA488CF-F FOUNDATION™ fieldbus display, namely:

$$\begin{aligned} U_i &= 17.5V \text{ dc} \\ I_i &= 380mA \text{ dc} \\ P_i &= 5.32W \end{aligned}$$

The maximum permitted cable parameters for the fieldbus segment must be reduced by the equivalent internal capacitance C_i and inductance L_i of the BA488CF-F. The BA488CF-F equivalent capacitance and inductance are very small and make little practical difference.

$$\begin{aligned} C_i &= 1nF \\ L_i &= 8\mu H \end{aligned}$$

4.3 External switches

For applications requiring operator inputs to be made by large industrial push buttons, terminals S1 to S7 allow up to six external switches to be connected to the Fieldbus Display. When external switches are connected the front panel push buttons may be operated in parallel or disabled – see section 6.7.6.

For installation in a hazardous area the switches and associated wiring must comply with the requirements for *simple apparatus*. i.e. the switch must be mechanically activated and have IP20 protection, and both the switch and the wiring must be capable of withstanding a 500V rms insulation test to earth for one minute. Most industrial push buttons and wiring satisfy these requirements.

Although the allowable cable parameters are large, it is recommended that the cables are less than 5m long.

If a safe area switch is to be connected to a Fieldbus Display located in a hazardous area, the switch contact must be transferred via a certified intrinsically safe relay or a galvanic isolator having zero output safety parameters as shown in Fig 3.

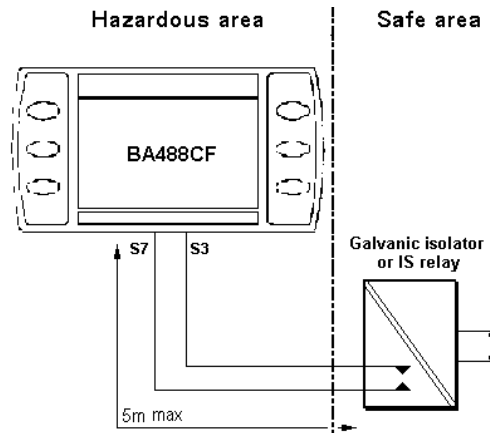


Fig 3 External push button switch in safe area

4.4 Alarm outputs

Each alarm output is a galvanically isolated single pole solid state switch output as shown in Fig 4.

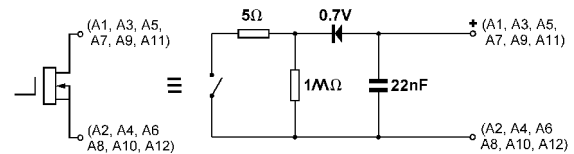


Fig 4 Equivalent circuit of each switch output

The outputs are polarised and current will only flow in one direction. Odd numbered terminals should be connected to the positive side of the supply.

$$\begin{aligned} R_{on} &= 5\Omega + 0.7V \\ R_{off} &= \text{greater than } 1M\Omega \end{aligned}$$

Note: Because of the series protection diode, some test meters may not detect a closed alarm output

CAUTION

These Alarm Outputs should not be used for critical safety applications such as an emergency shut down system.

When the BA488CF-F FOUNDATION™ fieldbus display is disconnected from the fieldbus, or the fieldbus is de-energised all the alarm outputs will open irrespective of how they have been configured.

5. INSTALLATION

5.1 Location

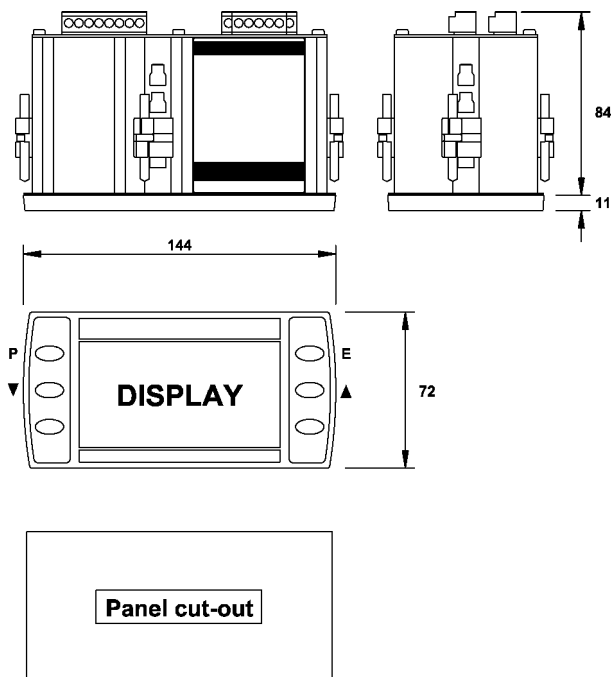
The BA488CF-F FOUNDATION™ fieldbus display is housed in a robust aluminium enclosure with a toughened glass window mounted in a Noryl bezel. The front of the instrument provides IP66 protection and a gasket seals the joint between the instrument enclosure and the panel. The instrument may be installed in any panel providing the environmental limits shown in the specification are not exceeded.

CAUTION

Special conditions apply for installation in Zone 0, see section 3.2

Fig 5 shows the overall dimensions of the BA488CF-F and the panel cut-out. To achieve an IP66 seal between the instrument enclosure and the panel, the smaller cut-out must be used and the instrument secured with four panel mounting clips.

The BA488CF-F liquid crystal display has maximum contrast when viewed from directly ahead and slightly below the centre line of the instrument.



Cut-out Dimensions

To achieve an IP66 seal between instrument enclosure and panel

136.0 +0.5/-0.0 x 66.2 +0.5/0.0

DIN 43 700

138.0 +1.0/-0.0 x 68.0 +0.7/-0.0

Fig 5 BA488CF-F dimensions

5.2 Installation Procedure

- Insert the BA488CF-F into the instrument panel cut-out from the front of the panel.
- Fix panel mounting clips to opposite sides of the instrument and tighten. Recommended tightening torque is 22cNm (1.95lbf in). **Do not over tighten**. Four clips are required to achieve an IP66 seal between the instrument enclosure and the panel.
- Connect the panel wiring to the rear terminal block(s) as shown in Fig 6. To simplify installation, the terminals are removable so that panel wiring can be completed before the instrument is installed.

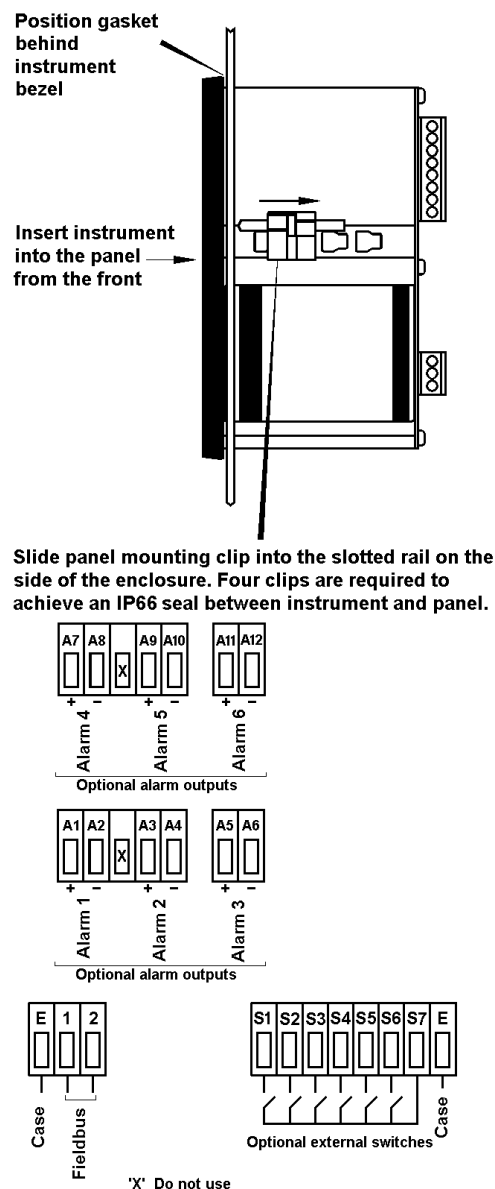


Fig 6 Installation and terminal connections

5.3 EMC

The BA488CF-F complies with the European EMC Directive and with the UK statutory requirements. For specified immunity, all wiring should be in screened twisted pairs with the screens earthed at one point in the safe area.

6. CONFIGURATION

6.1 Display transducer block

In addition to loading the BA488CF-F FOUNDATION™ fieldbus display Device Description files onto the system host, the eight inputs require individual configuration.

Each of the four inputs of the two Display Transducer Blocks has the following fieldbus configurable parameters:

Bargraph_Min	Defines bargraph lower limit												
Bargraph_Max	Defines bargraph higher limit												
Display_format	Defines the position of the displayed decimal point. Six options are available: <table> <tr> <td>Auto</td><td>Max resolution with selected display format.</td></tr> <tr> <td>4 DP</td><td>4 digits on right of decimal point</td></tr> <tr> <td>3 DP</td><td>3 digits on right of decimal point</td></tr> <tr> <td>2 DP</td><td>2 digits on right of decimal point</td></tr> <tr> <td>1 DP</td><td>1 digit on right of decimal point</td></tr> <tr> <td>0 DP</td><td>No decimal point</td></tr> </table>	Auto	Max resolution with selected display format.	4 DP	4 digits on right of decimal point	3 DP	3 digits on right of decimal point	2 DP	2 digits on right of decimal point	1 DP	1 digit on right of decimal point	0 DP	No decimal point
Auto	Max resolution with selected display format.												
4 DP	4 digits on right of decimal point												
3 DP	3 digits on right of decimal point												
2 DP	2 digits on right of decimal point												
1 DP	1 digit on right of decimal point												
0 DP	No decimal point												
Zero_offset	Adds a positive or negative offset to the fieldbus variable before it is displayed.												
Gain_factor	Multiplies the fieldbus variable by a factor before it is displayed.												
$\text{Display} = (\text{Gain factor} \times \text{fieldbus variable}) + \text{Offset}$													
Descriptor	Displayed fieldbus variable identification. Up to 16 characters can be accepted but the number displayed varies depending upon the display screen selected.												
Units	Displayed units of measurement. Up to 8 characters can be accepted, but the number displayed varies depending upon the display screen selected.												
IN_value	Fieldbus value to be displayed												
IN_value_status	Indicates validity of displayed fieldbus value.												

6.2 Screen selection and alarm configuration

Screen selection and, if fitted, alarm configuration is performed via the four front panel push buttons.

All the display and alarm configuration functions are contained in an easy to use menu that is shown in Fig 7. Where necessary the sub-menus contain on-screen prompts to guide the user through each adjustment.

When navigating through the configuration menu, the push button(s) should be held until the required screen is displayed.

6.3 Default configuration

Unless otherwise requested at the time of ordering, BA488CF-F FOUNDATION™ fieldbus displays will be supplied configured as follows:

Keys	Both
Display brightness	100%
Display contrast	50%
Quick access menu	On
Quick access menu code	0000
Configuration menu access code.	0000
Screen	Single variable
Number Format	Auto
All alarms	Disabled
Alarm activation	Good data only
Alarm outputs	N/C
Bargraph	
Low	0
High	100
Input scaling	
Zero offset	0
Gain factor	1
Status text	On
Last input	8
Revision	Revision 3 (2 x IS function blocks)

6.4 Accessing the instrument configuration menu.

Throughout this manual push buttons are shown in italics e.g. **P** **E** ▼ ▲ and legends displayed by the instrument are shown within inverted commas e.g. 'Enter Access Code'. Operating the **P** and **E** push buttons simultaneously accesses the display configuration menu. If the BA488CF-F is not protected by an access code the main menu will be displayed. If an access code other than the default code 0000 has already been entered, the BA488CF-F will request that the access code be entered.

Using the ▼ or ▲ button set the first digit of the code which will be flashing. Pressing **P** will transfer control to the next digit, which should be adjusted in the same way. When all four digits have been set, pressing the **E** button will enter the access code. If the code is correct the main menu will be displayed, if the code is incorrect 'Invalid Code' will be displayed.

When entering an access code, timeout will occur and the instrument will automatically return to the operating mode ten seconds after a push button was last operated. In all other menus, timeout occurs after sixty seconds.

The structure of the display configuration menu is shown in Fig 7. Navigation is achieved by highlighting the required function using the ▼ and ▲ buttons and then operating the **P** button to display the selected function sub-menu, from which a further selection or adjustment may be made. Operating the **E** button moves the display back one level.

A flashing highlight indicates that an option or alphanumeric character may be selected using the ▼ and ▲ buttons and entered using the **E** button. If only one entry or adjustment can be made in a sub-menu, the display will automatically move up one menu level when the adjustment is entered. If more than one adjustment can be made in a sub-menu, the highlight may be moved to the second variable using the ▼ or ▲ button after the first setting has been entered. Operating the **P** button allows the second variable to be adjusted.

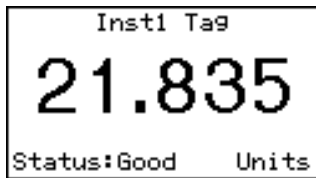
When multiple numeric or alpha characters are adjusted e.g. an alarm setpoint or a tag legend, the adjustment is made one digit at a time using the ▼ and ▲ buttons. After the first flashing digit has been set as required, the flashing highlight can be moved to the next digit by operating the **P** button. When all digits have been set, operating the **E** button will enter the setting.

Following completion of the instrument configuration, the **E** button should be operated to step the display back to the main menu. One more operation of the **E** button will then return the BA488CF-F to the operating mode.

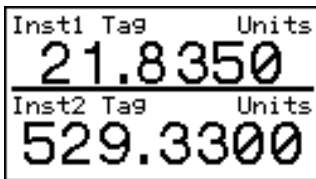
6.5 Screen selection

The BA488CF-F can display up to eight fieldbus variables. These are identified as IN_1 to IN_8. The fieldbus variable that each one represents is determined by the BA488CF-F configuration at the fieldbus system host – see the *FOUNDATION™ fieldbus Interface Guide*.

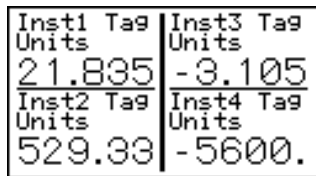
This sub-menu allows one of eleven standard display formats to be selected. The standard formats contain one, two, three, four or eight fieldbus variables some with bargraphs as shown below.



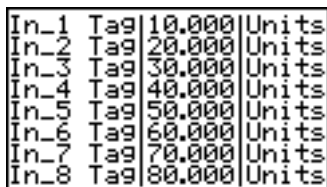
One variable



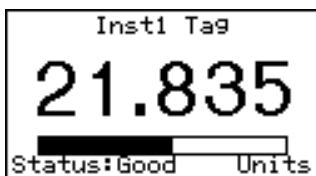
Two variables



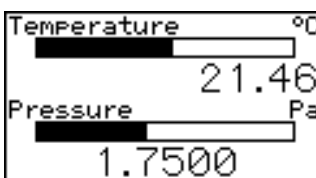
Four variables



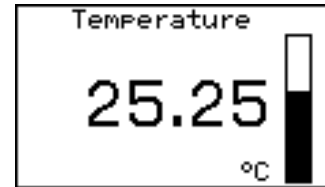
Eight variables



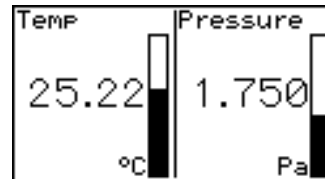
One variable + horizontal bargraph



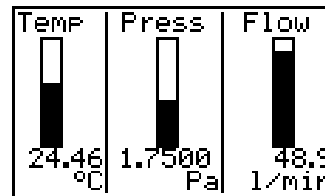
Two variables + horizontal bargraphs



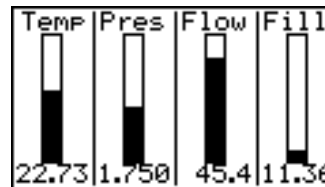
One variable + vertical bargraph



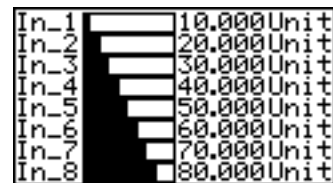
Two variables + vertical bargraphs



Three variables + vertical bargraphs



Four variables + vertical bargraphs



Eight variables + horizontal bargraphs

6.6 Alarm configuration

Note: Alarm menus are only included when the BA488CF-F is fitted with optional alarm outputs. Outputs are locally activated from the fieldbus variables and are configured via the instrument menus and push buttons. They cannot be controlled via the fieldbus.

Each of the six alarms may be linked to any one of the eight fieldbus variables displayed by the BA488CF-F. Each alarm output can be conditioned to function as a high or a low alarm, or as a combined high and low alarm. The output can be conditioned as normally open 'N/O', or normally closed 'N/C' in the non-alarm condition. Irrespective of settings alarm outputs will be open when the instrument is not powered from the fieldbus.

When an alarm is activated, the associated fieldbus variable display flashes, i.e. alternates between dark figures on a light background and light figures on a dark background.

There are eight alarm-conditioning sub-menus.

6.6.1 Alarm summary

Shows to which fieldbus variable each alarm is linked and how each alarm has been conditioned i.e. high, low, or combined high & low alarm with normally open or closed output. No adjustments can be made in this sub-menu.

6.6.2 Alarm activation

Fieldbus variables that have not been validated are displayed with dark characters on a light background, and some screen formats also contain a status indication. This sub-menu allows the alarm outputs to be conditioned so that they only operate with validated fieldbus data, or to operate irrespective of data validity.

6.6.3 Alarm output

There is a separate sub-menu for each of the six alarm outputs; these link the alarm to one of the displayed fieldbus variables and define the alarm function and the setpoints.

To link the alarm to a displayed variable, position the cursor over the 'IN_n' field, press **P** and using the ▼ or ▲ button select the required input source. Enter the selection by pressing the **E** button.

Each alarm output can be N/O or N/C in the non-alarm condition. To change the setting, position the highlight over the 'N/O' or 'N/C' field, press **P** and use the ▼ or ▲ button to toggle the setting. Enter the selection by pressing the **E** button.

Each alarm has three functions that can be

independently enabled to condition the output as a low or high alarm, or as a combined low and high alarm, either with or without hysteresis.

The required functions can be individually enabled by positioning the highlight over the Enb/Dis (Enabled/Disabled) column, pressing **P** and toggling the function to the required state, then entering the selection by pressing the **E** button.

Alarm setpoints are entered digit by digit. Place the highlight over the setpoint to be adjusted and press **P**; the flashing digit to be adjusted may then be selected by again pressing **P**. When all the digits have been adjusted, operating the **E** button enters the value and moves the menu up one level.

The function of all alarms may be reviewed from the alarm summary menu - see 6.6.1.

6.7 Display configuration

6.7.1 Settings

The backlight brilliance and display contrast are adjustable from this sub-menu.

6.7.2 Quick Access

This sub-menu enables the Quick Access Menu which is described in sections 2.1 & 6.8. When enabled, an operator can adjust the display contrast and backlight brilliance without having access to any other conditioning menus.

6.7.3 Access Code

Defines a four digit alphanumeric code that must be entered to gain access to the Quick Access Menu. Alpha characters are case sensitive. Default code 0000 allows direct access without a code.

6.7.4 Status Text

The two single variable screens 1 and 4 will show the status of the FOUNDATION™ fieldbus variable as 'Good' or 'Bad' if the Status Text function is activated.

6.7.5 Last Input

This function allows the maximum number of FOUNDATION™ fieldbus variables to be defined so that unused inputs are skipped when the display is scrolled in the operating mode.

6.7.6 Keys

The function of the front panel push buttons may be transferred to the six optional external push buttons, with or without disabling the BA488CF-F front panel push buttons. The table below shows the function of the BA488CF-F front panel and the external push buttons for each of the four options that may be selected in the Keys sub-menu.

Selected option from Keys sub-menu	Push buttons	Function of push buttons		
		Screen scrolling	P+E access to configuration menu	P+Up access to quick access menu
Internal	BA488CF-F	Yes	Yes	Yes
	External	No	No	No
External	BA488CF-F	No	Yes	No
	External	Yes	Yes	Yes
Both	BA488CF-F	Yes	Yes	Yes
	External	Yes	Yes	Yes

For applications where the instrument is only displaying 1, 2, 3, 4 or 8 variables on a single screen, it is recommended that external buttons are selected but not fitted. This will disable the instrument front panel buttons, but still provide access to the configuration menu, which may be protected by a security code.

6.7.7 Code

Defines the four digit alphanumeric code that must be entered to gain access to the instrument configuration menus. Alpha characters are case sensitive. Default code 0000 allows direct access without a code.

6.7.8 Unit Info

Displays the instrument model number and the firmware version.

6.7.9 Defaults

This function enables the display and interface board factory defaults to be restored.

6.7.10 Display Defaults

This function restores the display defaults defined in section 6.3.

CAUTION

Existing settings cannot be recovered after this function has been used.

6.7.11 Interface Board Defaults

This function restores the Fieldbus Interface Board factory defaults.

CAUTION

Do not use this function when the BA488CF-F is connected to an operational fieldbus, as communication will be terminated.

6.8 Quick Access Menu

The Quick Access Menu allows an operator to adjust the backlight brilliance and the display contrast without having access to the other configuration parameters.

The quick access menu is accessed by operating the **P** and **▲** push buttons simultaneously. If the Quick Access Menu is not protected by an access code the contrast and brilliance controls will be displayed immediately. If an access code other than the default code 0000 has already been entered, the BA488CF-F will request that the access code be entered.

The backlight brilliance is adjusted using the **▼** and **▲** push buttons. Operating the **P** push button will transfer control to the display contrast adjustment. When both are set as required, operating the **E** button will store both settings and return the instrument to the operating mode.

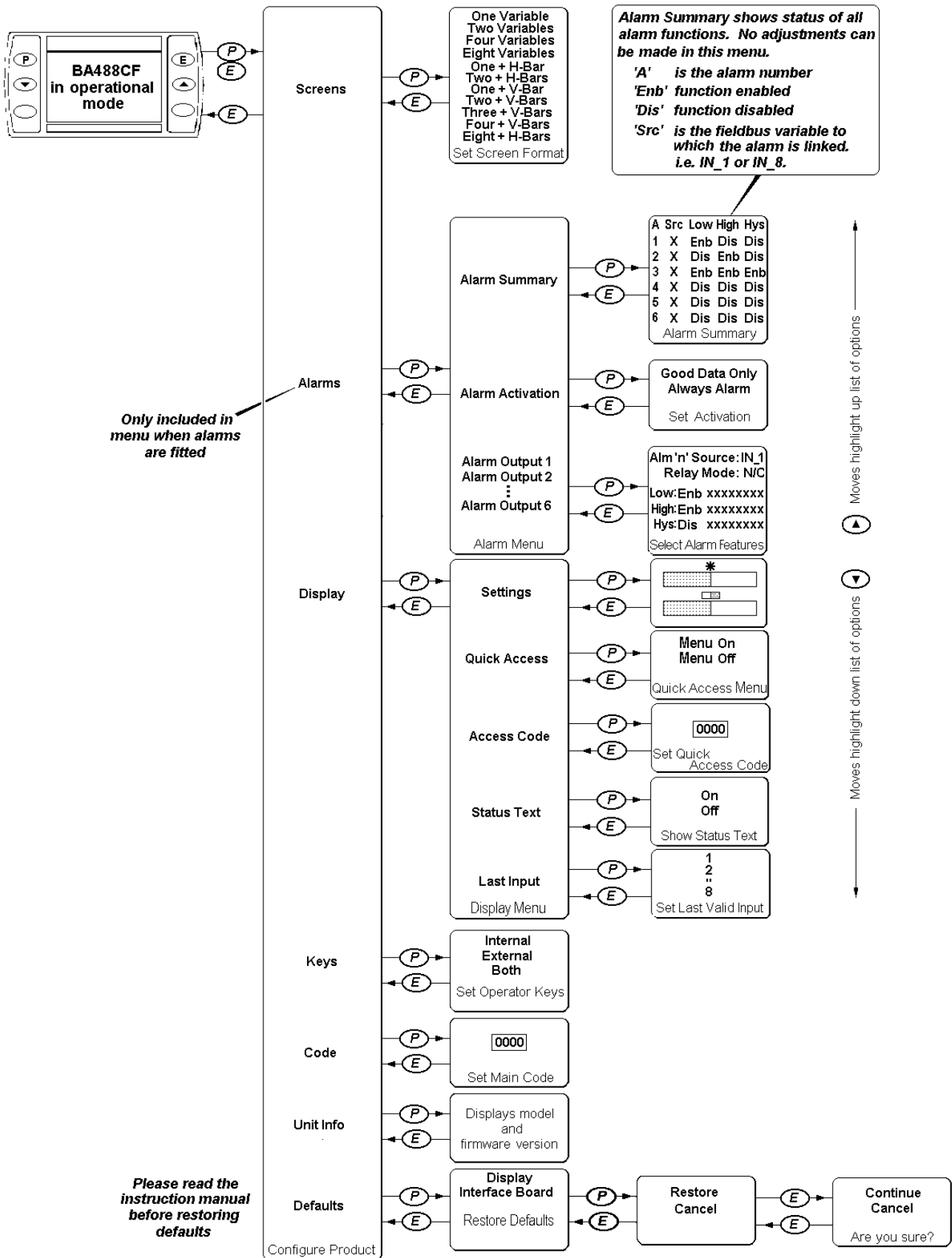


Fig 7 Structure of Configuration Menu

7. MAINTENANCE

7.1 Fault finding during commissioning

If a BA488CF-F FOUNDATION™ fieldbus display fails to function during commissioning the following procedure should be followed:

Symptom	Cause	Check:
No Display	Fieldbus not powered	9 to 17.5V between terminals 1 & 2.
No variables	Fieldbus not configured BA488CF-F does not have correct protocol	Instrument configuration at host That the BA488CF-F protocol is the same as the fieldbus. i.e. Fieldbus Foundation or Profibus PA.
Wrong variable displayed	Wrong screen selected	Other screens by operating <i>Up</i> or <i>Down</i> button
Display shows '????'	Display Overrange	Number Format
No backlight	Brilliance turned down	Setting in display menu
Low or excessive contrast	Incorrect contrast setting	Setting in display menu
Displayed variable is inverted i.e. light digits on dark background	Variable has 'bad' status	Configuration and instrument supplying variable
Displayed variable is flashing	Associated alarm has been activated	Setpoints
Bargraph on standard display format is shown dotted	Displayed fieldbus variable is outside bargraph limits or data is 'bad'	Bargraph limits

7.2 Fault finding after commissioning

ENSURE PLANT SAFETY BEFORE STARTING MAINTENANCE

Live maintenance is permitted on intrinsically safe equipment installed in a hazardous area, but only certified test equipment should be used unless a gas clearance certificate is available.

If a BA488CF-F fails after it has been functioning correctly, the table shown in section 7.1 may help to identify the cause of the failure.

If this procedure does not reveal the cause of the fault, it is recommended that the instrument is replaced.

7.3 Servicing

We recommend that faulty BA488CF-F FOUNDATION™ fieldbus displays are returned to BEKA associates or to your local agent for repair.

7.4 Routine maintenance

The mechanical and electrical condition of the instrument should be regularly checked. Initially annual inspections are recommended, although the inspection frequency should be adjusted to suit the environmental conditions.

7.5 Guarantee

Instruments which fail within the guarantee period should be returned to BEKA associates or your local agent. It is helpful if a brief description of the fault symptoms is provided.

7.6 Customer comments

BEKA associates is always pleased to receive comments from customers about our products and services. All communications are acknowledged and whenever possible, suggestions are implemented.

8. ACCESSORIES

8.1 Tag number

The BA488CF-F can be supplied with a thermally printed tag number on the rear panel. This tag number is not visible from the front of the instrument after installation.

8.2 FOUNDATION™ fieldbus Interface Guide

The BEKA FOUNDATION™ fieldbus Interface Guide which may be downloaded from the BEKA web site at www.beka.co.uk contains conditioning information for all BEKA FOUNDATION™ fieldbus products.

APPENDIX 1

FM approval for use in USA

A1.0 Factory Mutual Approval

For installations in the USA, the BA488CF-F FOUNDATION™ fieldbus display and optional alarms have been approved intrinsically safe and nonincendive by FM Approvals, project identification 3022546. Copies of the Certificate of Compliance are available from BEKA associates.

A1.1 Intrinsic safety approval

The BA488CF-F is approved to the FM Class 3610 intrinsic safety standard for use in indoor hazardous (classified) locations. Installations must comply with BEKA associates Control Drawing CI480-17, which is attached to this Appendix, ANSI/ISA RP12.06.01 'Installation of Intrinsically Safe Systems for Hazardous (Classified) Locations' and with the National Electrical Code ANSI/NFPA70.

The BA488CF-F has a T4 rating at ambient temperatures up to +60°C and may be used with the following gases and dusts:

Intrinsic Safety	
Division 1 or 2	
Class I	Group A & B Group C Group D
Zone 0, 1 or 2	
Class 1	Group IIC Group IIB Group IIA

The FM entity parameters are identical to the ATEX parameters and, like the ATEX certification, confirm that terminals 1 & 2 of the BA488CF-F comply with the requirements for a FISCO Field Device specified in IEC60079-27. The intrinsically safe circuits shown in Figs 2 and 3 of this manual may therefore be used for installations in the USA, providing the fieldbus power supply, terminators, Zener barriers and galvanic isolators are FM Approved and comply with BEKA associates Control Drawing CI480-17. The FM Approval also allows the BA488CF-F to be connected to non-FISCO systems using the entity concept – see section 4.2 of this manual.

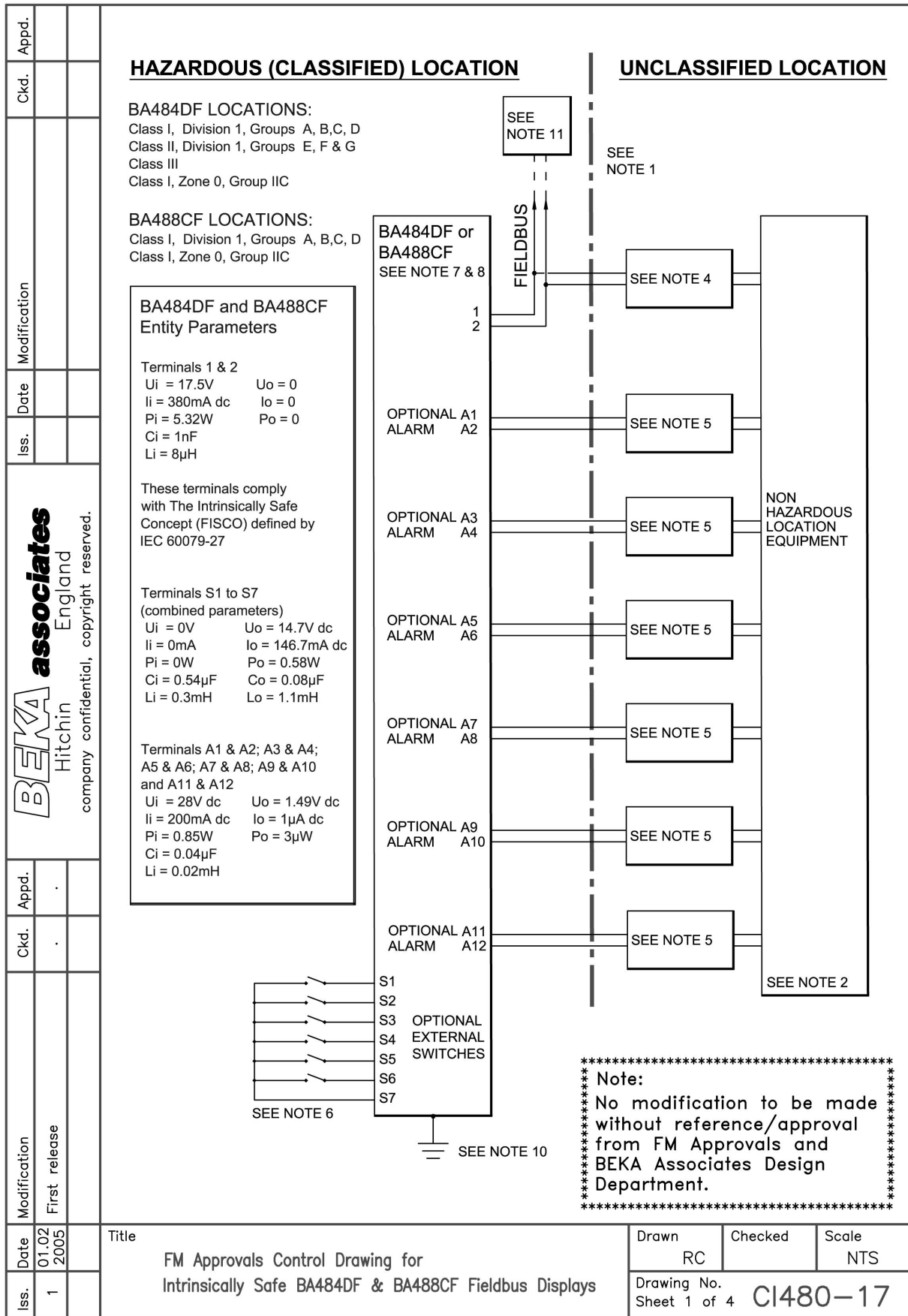
A1.2 Nonincendive approval

The BA488CF-F FOUNDATION™ fieldbus display is Class 3611 nonincendive approved by Factory Mutual allowing it to be installed in Division 2 indoor hazardous (classified) locations without the need for Zener barriers or galvanic isolators. Installations must comply with the BEKA associates Control Drawing CI480-18, which is attached to this Appendix, and with the National Electrical Code ANSI/NFPA70.


The FM Nonincendive Approval also allows the instrument to be connected to any FNICO compliant fieldbus segment powered by FM Approved Associated Nonincendive Field Wiring Apparatus.


The BA488CF-F has a T4 rating at ambient temperatures up to +60°C and may be used with the following gases and dusts:

Nonincendive	
Division 2	
Class I	Group A & B Group C Group D
Zone 2	
Class I	Group IIC Group IIB Group IIA




Iss.		Date		Modification		Ckd.		Appd.																																														
<p>BEKA associates Hitchin England company confidential, copyright reserved.</p>																																																						
Iss.		Date		Modification		Ckd.		Appd.																																														
<p>Notes:</p> <ol style="list-style-type: none"> The associated intrinsically safe barriers and fieldbus power supply must be FM approved and the manufacturers' installation drawings shall be followed when installing this equipment. The unclassified location equipment connected to the associated intrinsically safe barriers and fieldbus power supply shall not use or generate more than 250V rms or 250V dc. Installation shall be in accordance with ANSI/ISA RP 12.06.01 "Installation of Intrinsically Safe Systems for Hazardous (Classified) Locations" and the National Electrical Code ANSI/NFPA 70. Fieldbus power supply with FISCO compliant output (IEC6009-27) or galvanic isolator with entity parameters complying with the following requirements: <table border="0"> <tr> <td>Uo or Vt</td> <td>equal to or less than</td> <td>Ui</td> </tr> <tr> <td>Io or It</td> <td>equal to or less than</td> <td>li</td> </tr> <tr> <td>Po</td> <td>equal to or less than</td> <td>Pi</td> </tr> <tr> <td>La</td> <td>equal to or greater than</td> <td>Lcable + Li</td> </tr> <tr> <td>Ca</td> <td>equal to or greater than</td> <td>Ccable + Ci</td> </tr> </table> One single channel or one channel of a dual channel associated intrinsically safe barrier or galvanic isolator with entity parameters complying with the following requirements: <table border="0"> <tr> <td>Uo or Vt</td> <td>equal to or less than</td> <td>Ui</td> </tr> <tr> <td>Io or It</td> <td>equal to or less than</td> <td>li</td> </tr> <tr> <td>Po</td> <td>equal to or less than</td> <td>Pi</td> </tr> <tr> <td>La</td> <td>equal to or greater than</td> <td>Lcable + Li</td> </tr> <tr> <td>Ca</td> <td>equal to or greater than</td> <td>Ccable + Ci</td> </tr> </table> Hazardous (classified) location equipment may be simple apparatus e.g. mechanically activated switches OR FM approved equipment with entity parameters complying with following requirements: <table border="0"> <tr> <td>Uo or Vt</td> <td>equal to or less than</td> <td>Ui</td> </tr> <tr> <td>Io or It</td> <td>equal to or less than</td> <td>li</td> </tr> <tr> <td>Po</td> <td>equal to or less than</td> <td>Pi</td> </tr> <tr> <td>La</td> <td>equal to or greater than</td> <td>Lcable + Li</td> </tr> <tr> <td>Ca</td> <td>equal to or greater than</td> <td>Ccable + Ci</td> </tr> </table> To maintain IP66 protection between the BA488CF and the mounting panel: <p>Four panel mounting clips should be used</p> <p>Minimum panel thickness should be 2mm (0.08inches) Steel 3mm (0.12inches) Aluminium</p> <p>Outside panel finish should be smooth, free from particle inclusions, runs or build-up around cut-out.</p> <p>Panel cut-out should be 66.2 x 136.0mm -0.0 +0.5 (2.60 x 5.35 inches -0.00 +0.02)</p> <p>Edges of panel cut-out should be deburred and clean</p> <p>Each panel mounting clip should be tightened to between: 20 and 22cNm (1.77 to 1.95 inLb)</p> <p style="text-align: right;">cont:</p> 										Uo or Vt	equal to or less than	Ui	Io or It	equal to or less than	li	Po	equal to or less than	Pi	La	equal to or greater than	Lcable + Li	Ca	equal to or greater than	Ccable + Ci	Uo or Vt	equal to or less than	Ui	Io or It	equal to or less than	li	Po	equal to or less than	Pi	La	equal to or greater than	Lcable + Li	Ca	equal to or greater than	Ccable + Ci	Uo or Vt	equal to or less than	Ui	Io or It	equal to or less than	li	Po	equal to or less than	Pi	La	equal to or greater than	Lcable + Li	Ca	equal to or greater than	Ccable + Ci
Uo or Vt	equal to or less than	Ui																																																				
Io or It	equal to or less than	li																																																				
Po	equal to or less than	Pi																																																				
La	equal to or greater than	Lcable + Li																																																				
Ca	equal to or greater than	Ccable + Ci																																																				
Uo or Vt	equal to or less than	Ui																																																				
Io or It	equal to or less than	li																																																				
Po	equal to or less than	Pi																																																				
La	equal to or greater than	Lcable + Li																																																				
Ca	equal to or greater than	Ccable + Ci																																																				
Uo or Vt	equal to or less than	Ui																																																				
Io or It	equal to or less than	li																																																				
Po	equal to or less than	Pi																																																				
La	equal to or greater than	Lcable + Li																																																				
Ca	equal to or greater than	Ccable + Ci																																																				
Iss.	1	Date	01.02 2005	Modification	First release	Ckd.		Appd.																																														
<p>Title</p> <p>FM Approvals Control Drawing for Intrinsically Safe BA484DF & BA488CF Fieldbus Displays</p>						<p>Drawn</p> <p>RC</p>	<p>Checked</p>	<p>Scale</p> <p>NTS</p>																																														
<p>Drawing No. Sheet 2 of 4</p>						<p>CI480-17</p>																																																

 BEKA associates Hitchin England company confidential, copyright reserved.	Iss.		Date		Modification		Ckd.		Appd.							
<p>8. When installed in a hazardous (classified) location the BA484DF Fieldbus Display shall be fitted with cable glands / conduit hubs selected from the following table</p> <p>Metallic glands and hubs must be grounded – see note 9.</p> <table border="1" data-bbox="493 492 1310 911"> <thead> <tr> <th>Class</th> <th>Permitted gland or conduit hub</th> </tr> </thead> <tbody> <tr> <td>Class I</td> <td>Any metallic or plastic cable gland or conduit hub that provides the required environmental protection.</td> </tr> <tr> <td>Class II and III</td> <td> Crouse – Hinds Myler hubs SSTG-1 STG-1 STAG-1 MHUB-1 O-Z / Gedrey Hubs CHMG-50DT REMKE hub WH-1-G Killark Glands CMCXAA050 MCR050 MCX050 </td> </tr> </tbody> </table> <p>9. In addition to the supplied bonding plate, when 2 or 3 metallic glands or conduit hubs are fitted to a BA484DF Fieldbus Display, all metallic glands or conduit hubs must be connected together and grounded.</p> <p>10. CAUTION: The BA484DF and BA488CF Fieldbus Display enclosures are manufactured from conductive plastic per Article 250 of the National Electrical Code the enclosures shall be grounded using the 'E' terminal on the terminal block.</p> <p>11. The terminator on the Fieldbus must be FM Approved.</p> <p>12. The BA484DF should be mounted where it is shielded from direct sunlight.</p> <p style="text-align: right;">Cont.</p>											Class	Permitted gland or conduit hub	Class I	Any metallic or plastic cable gland or conduit hub that provides the required environmental protection.	Class II and III	Crouse – Hinds Myler hubs SSTG-1 STG-1 STAG-1 MHUB-1 O-Z / Gedrey Hubs CHMG-50DT REMKE hub WH-1-G Killark Glands CMCXAA050 MCR050 MCX050
Class	Permitted gland or conduit hub															
Class I	Any metallic or plastic cable gland or conduit hub that provides the required environmental protection.															
Class II and III	Crouse – Hinds Myler hubs SSTG-1 STG-1 STAG-1 MHUB-1 O-Z / Gedrey Hubs CHMG-50DT REMKE hub WH-1-G Killark Glands CMCXAA050 MCR050 MCX050															
Iss.	1	Date	01.02 2005	Title				Drawn	Checked	Scale						
				FM Approvals Control Drawing for Intrinsically Safe BA484DF & BA488CF Fieldbus Displays				RC		NTS						
								Drawing No. Sheet 3 of 4 CI480-17								

Iss.	Date	Modification	Ckd.	Appd.	 <p>company confidential, copyright reserved.</p>	Iss.	Date	Modification	Ckd.	Appd.	<p>FISCO Rules</p> <p>The FISCO Concept allows the interconnection of intrinsically safe apparatus to associated apparatus not specifically examined in such combination. The criterion for such interconnection is that the voltage (V_{max}), the current (I_{max}) and the power (P_{max}) which intrinsically safe apparatus can receive and remain intrinsically safe, considering faults, must be equal or greater than the voltage (U_o, V_{oc} or V_t), the current (I_o, I_{sc} or I_t) and the power (P_o) which can be provided by the associated apparatus (supply unit). In addition the maximum unprotected residual capacitance (C_i) and inductance (L_i) of each apparatus (other than terminators) connected to the Fieldbus must be less than or equal to 5nF and 10uH respectively.</p> <p>In each I.S. Fieldbus segment only one active source, normally the associated apparatus, is allowed to provide the necessary power for the Fieldbus system. The allowed voltage (U_o, V_{oc} or V_t) of the associated apparatus used to supply the bus cable must be limited to the range 14Vdc to 24Vdc. All other equipment connected to the bus cable has to be passive, meaning that the apparatus is not allowed to provide energy to the system, except a leakage current of 50μA for each connected device. Separately powered equipment needs galvanic isolation to ensure the intrinsically safety Fieldbus circuit remains passive.</p> <p>The cable used to interconnect the devices needs to comply with the following parameters:</p> <p>Loop resistance R': 15....150Ω/km Inductance per unit length L': 0.4....1mH/km</p> <p>Capacitance per unit length C': 80....200nF/km $C' = C' \text{ line/line} + 0.5 C' \text{ line/screen}$, if both lines are floating or $C' = C' \text{ line/line} + C' \text{ line/screen}$, if the screen is connected to one line.</p> <p>Length of spur cable: max. 30m Length of trunk cable: max. 1km Length of splice: max = 1m</p> <p>Terminators</p> <p>At the end of each trunk cable an FM Approved line terminator with the following parameters is suitable: $R = 90....100\Omega$ $C = 0 \text{}2.2\mu F$</p> <p>System evaluation</p> <p>The number of passive devices like transmitters, actuators, connected to a single bus segment is not limited due to I.S. reasons. Furthermore, if the above rules are respected, the inductance and the capacitance of the cable need not be considered and will not impair the intrinsic safety of the installation.</p> <p>Notes.</p> <p>1. The intrinsic safety FISCO concept allows the interconnection of FM Approved Intrinsically Safe devices with FISCO parameters not specifically examined in combination as a system when: U_o or V_{oc} or $V_t \leq V_{max}$, I_o, I_{sc} or $I_t \leq I_{max}$, $P_o \leq P_i$."</p>			
												Iss.	Date	Modification
1	01.02 2005	First release									<p>Title</p> <p>FM Approvals Control Drawing for Intrinsically Safe BA484DF & BA488CF Fieldbus Displays</p>	<p>Drawn</p> <p>RC</p>	<p>Checked</p>	<p>Scale</p> <p>NTS</p>
											<p>Drawing No.</p> <p>Sheet 4 of 4</p>	<p>CI480-17</p>		

Iss.		Date		Modification		Ckd.		Appd.																																								
<p>BEKA associates Hitchin England company confidential, copyright reserved.</p>																																																
Iss.	1	Date	01.03 2005	Modification	First release	Ckd.	.	Appd.	.																																							
<p>Notes:</p> <ol style="list-style-type: none"> The unclassified location equipment connected to the associated nonincendive field wiring apparatus must not use or generate more than 250V rms or 250V dc. Nonincendive field wiring installations shall be in accordance with the National Electrical Code ANSI/NFPA 70. The Nonincendive Field Wiring concept allows interconnection of Nonincendive Field Wiring Apparatus with Associated Nonincendive Field Wiring Apparatus using any of the wiring methods permitted for unclassified locations. Linear power supply A linear fieldbus power supply shall be: FM Approved Associated Nonincendive Field Wiring Apparatus installed in the unclassified location with parameters complying with the following requirements: OR FM Approved Nonincendive Field Wiring Apparatus installed in the classified location with parameters complying with the following requirements: <table border="0"> <tr> <td>Voc</td> <td>equal to or less than</td> <td>Vmax</td> </tr> <tr> <td>La</td> <td>equal to or greater than</td> <td>Lcable + Li</td> </tr> <tr> <td>Ca</td> <td>equal to or greater than</td> <td>Ccable + Ci</td> </tr> </table> FNICO non-linear power supply A FNICO non-linear fieldbus power supply shall be: FM Approved Associated Nonincendive Field Wiring Apparatus installed in the unclassified location complying with the following table: OR FM Approved Nonincendive Field Wiring Apparatus installed in the classified location complying with the following table: <table border="0"> <tr> <td>Voc</td> <td>Maximum current for Groups AB [IIC]</td> <td>Maximum current for Groups CD [IIB, IIA]</td> </tr> <tr> <td>V</td> <td>mA</td> <td>mA</td> </tr> <tr> <td>14</td> <td>274</td> <td>570</td> </tr> <tr> <td>15</td> <td>199</td> <td>531</td> </tr> <tr> <td>16</td> <td>154</td> <td>432</td> </tr> <tr> <td>17</td> <td>121</td> <td>360</td> </tr> <tr> <td>17.5</td> <td>112</td> <td>319</td> </tr> </table> Apparatus connected to the optional alarm contacts shall be FM Approved as Associated Nonincendive Field Wiring Apparatus and shall comply with the following requirements: <table border="0"> <tr> <td>Voc</td> <td>equal to or less than</td> <td>Vmax</td> </tr> <tr> <td>La</td> <td>equal to or greater than</td> <td>Lcable + Li</td> </tr> <tr> <td>Ca</td> <td>equal to or greater than</td> <td>Ccable + Ci</td> </tr> </table> Terminals S1 to S7 shall be connected to simple apparatus or volt free contacts of FM Approved Nonincendive Field Wiring Apparatus or FM Approved Associated Nonincendive Field Wiring Apparatus installed using Division 2 wiring methods. To maintain IP65 protection between the BA488CF and the mounting panel: Four panel mounting clips should be used Minimum panel thickness should be 2mm (0.08inches) Steel 3mm (0.12inches) Aluminium Outside panel finish should be smooth, free from particle inclusions, runs or build-up around cut-out. Panel cut-out should be 66.2 x 136.0mm -0.0 +0.5 (2.60 x 5.35 inches -0.00 +0.02) Edges of panel cut-out should be deburred and clean Each panel mounting clip should be tightened to between: 20 and 22cNm (1.77 to 1.95 inLb) <p style="text-align: right;">Cont.</p>										Voc	equal to or less than	Vmax	La	equal to or greater than	Lcable + Li	Ca	equal to or greater than	Ccable + Ci	Voc	Maximum current for Groups AB [IIC]	Maximum current for Groups CD [IIB, IIA]	V	mA	mA	14	274	570	15	199	531	16	154	432	17	121	360	17.5	112	319	Voc	equal to or less than	Vmax	La	equal to or greater than	Lcable + Li	Ca	equal to or greater than	Ccable + Ci
Voc	equal to or less than	Vmax																																														
La	equal to or greater than	Lcable + Li																																														
Ca	equal to or greater than	Ccable + Ci																																														
Voc	Maximum current for Groups AB [IIC]	Maximum current for Groups CD [IIB, IIA]																																														
V	mA	mA																																														
14	274	570																																														
15	199	531																																														
16	154	432																																														
17	121	360																																														
17.5	112	319																																														
Voc	equal to or less than	Vmax																																														
La	equal to or greater than	Lcable + Li																																														
Ca	equal to or greater than	Ccable + Ci																																														
<p>Title</p> <p>FM Approvals Control Drawing for Nonincendive BA484DF & BA488CF Fieldbus Displays</p>						<p>Drawn</p> <p>RC</p>	<p>Checked</p>	<p>Scale</p> <p>NTS</p>																																								
<p>Drawing No. Sheet 2 of 4</p>						<p>CI480-18</p>																																										

BEKA Hitchin associates England company confidential, copyright reserved.	Iss.		Date		Modification		Ckd.		Appd.							
	<p>7. When installed in a hazardous (classified) location the BA484DF Fieldbus Display shall be fitted with cable glands / conduit hubs selected from the following table.</p> <p>Metallic glands and hubs must be grounded – see note 8.</p> <table border="1"> <thead> <tr> <th>Class</th> <th>Permitted gland or conduit hub</th> </tr> </thead> <tbody> <tr> <td>Class I</td> <td>Any metallic or plastic cable gland or conduit hub that provides the required environmental protection.</td> </tr> <tr> <td>Class II and III</td> <td> Crouse – Hinds Myler hubs SSTG-1 STG-1 STAG-1 MHUB-1 O-Z / Gedrey hub CHMG-50DT REMKE hub WH-1-G Killark Glands CMCXAA050 MCR050 MCX050 </td> </tr> </tbody> </table>										Class	Permitted gland or conduit hub	Class I	Any metallic or plastic cable gland or conduit hub that provides the required environmental protection.	Class II and III	Crouse – Hinds Myler hubs SSTG-1 STG-1 STAG-1 MHUB-1 O-Z / Gedrey hub CHMG-50DT REMKE hub WH-1-G Killark Glands CMCXAA050 MCR050 MCX050
	Class	Permitted gland or conduit hub														
	Class I	Any metallic or plastic cable gland or conduit hub that provides the required environmental protection.														
	Class II and III	Crouse – Hinds Myler hubs SSTG-1 STG-1 STAG-1 MHUB-1 O-Z / Gedrey hub CHMG-50DT REMKE hub WH-1-G Killark Glands CMCXAA050 MCR050 MCX050														
<p>8. In addition to the supplied bonding plate, when 2 or 3 metallic glands or conduit hubs are fitted to a BA484DF Fieldbus Display, all metallic glands or conduit hubs must be connected together and grounded.</p>																
<p>9. CAUTION: The BA484DF and BA488CF Fieldbus Display enclosures are manufactured from conductive plastic per Article 250 of the National Electrical Code the enclosures shall be grounded using the 'E' terminal on the terminal block.</p>																
<p>10. The terminator on the Fieldbus must be FM Approved.</p>																
<p>11. The BA484DF should be mounted where it is shielded from direct sunlight.</p>																
<p style="text-align: right;">Cont.</p>																
Iss.	1	Date	01.03 2005	Title FM Approvals Control Drawing for Nonincendive BA484DF & BA488CF Fieldbus Displays				Drawn RC	Checked	Scale NTS						
								Drawing No. Sheet 3 of 4 CI480-18								

Iss.	1	Date	01.03 2005	Modification	First release	Ckd.	.	Appd.	.	
<div style="display: flex; align-items: center;"> <div style="text-align: center;">  <p>BEKA Hitchin</p> </div> <div style="margin-left: 10px;"> <p>associates England</p> <p>company confidential, copyright reserved.</p> </div> </div>										
Iss.		Date		Modification		Ckd.		Appd.		
<p><u>FNICO Rules</u></p> <p>The FNICO Concept allows the interconnection of intrinsically safe apparatus to associated apparatus not specifically examined in such combination. The criterion for such interconnection is that the voltage (Vmax), the current (Imax) and the power (Pmax) which intrinsically safe apparatus can receive and remain intrinsically safe, considering faults, must be equal or greater than the voltage (Uo, Voc or Vt), the current (Io, Isc or It) and the power (Po) which can be provided by the associated apparatus (supply unit). In addition the maximum unprotected residual capacitance (Ci) and inductance (Li) of each apparatus (other than terminators) connected to the Fieldbus must be less than or equal to 5nF and 20uH respectively.</p> <p>In each I.S. Fieldbus segment only one active source, normally the associated apparatus, is allowed to provide the necessary power for the Fieldbus system. The allowed voltage (Uo, Voc or Vt) of the associated apparatus used to supply the bus cable must be limited to the range 14Vdc to 17.5Vdc. All other equipment connected to the bus cable has to be passive, meaning that the apparatus is not allowed to provide energy to the system, except a leakage current of 50µA for each connected device. Separately powered equipment needs galvanic isolation to ensure the intrinsically safety Fieldbus circuit remains passive.</p> <p>The cable used to interconnect the devices needs to comply with the following parameters:</p> <p>Loop resistance R': 15....150Ω/km Inductance per unit length L': 0.4....1mH/km</p> <p>Capacitance per unit length C': 80....200nF/km C' = C' line/line+0.5 C' line/screen, if both lines are floating or C' = C' line/line + C'line/screen, if the screen is connected to one line.</p> <p>Length of spur cable: max. 30m Length of trunk cable: max. 1km Length of splice: max = 1m</p> <p>Terminators At the end of each trunk cable an FM Approved line terminator with the following parameters is suitable: R= 90...100Ω C = 0....2.2µF</p> <p>System evaluation The number of passive devices like transmitters, actuators, connected to a single bus segment is not limited due to nonincendive reasons. Furthermore, if the above rules are respected, the inductance and the capacitance of the cable need not be considered and will not impair the intrinsic safety of the installation.</p> <p>Notes. 1. The intrinsic safety FNICO concept allows the interconnection of FM Approved nonincendive devices with FNICO parameters not specifically examined in combination as a system when: Uo or Voc or Vt ≤ Vmax"</p>										
<p>Title</p> <p>FM Approvals Control Drawing for Nonincendive BA484DF & BA488CF Fieldbus Displays</p>						<p>Drawn</p> <p>RC</p>	<p>Checked</p>	<p>Scale</p> <p>NTS</p>	<p>Drawing No. Sheet 4 of 4</p> <p>CI480-18</p>	

APPENDIX 2

IECEX Certification

A2.0 The IECEx Certification Scheme

IECEX is a global certification scheme for explosion protected products which aims to harmonise international certification standards.

For additional information about the IECEx certification scheme and to view the BEKA associate certificates, please visit www.iecex.com

A2.1 IECEx Certificate of Conformity

The BA488CF-F Fieldbus Display has been issued with an IECEx Certificate of Conformity number IECEx ITS 05.0007X which specifies the following certification code and marking:

For gas	Ex ia IIC T4 Ga
	Ta = -40°C to 60°C

The specified intrinsic safety parameters are identical to the ATEX parameters and confirm that terminals 1 & 2 comply with the requirements for a FISCO Field Device specified in IEC 60079-11.

The IECEx certificate may be downloaded from www.beka.co.uk, www.iecex.com or requested from the BEKA sales office.

A2.2 Installation

The IECEx certification specifies identical safety parameters and installation requirements as the ATEX & UKEX certifications. The ATEX & UKEX installation requirements specified in sections 3.2 to 3.5 therefore also apply for IECEx installations. The local code of practice should also be consulted.

Special conditions for safe use in Zone 0

In the unlikely event of installation in a Zone 0 potentially explosive atmosphere, the BA488CF-F FOUNDATION™ fieldbus display shall be installed such that even in the event of rare incidents, an ignition source due to impact or friction between the aluminium enclosure at the rear of the instrument mounting panel and iron/steel is excluded.

APPENDIX 3



EU Declaration of Conformity

This certificate is issued for electrical apparatus BA488CF-F and BA488CF-P

Description

BA488CF is a panel mounting, intrinsically safe, eight variable Fieldbus Display.
Suffix F denotes FOUNDATION™ fieldbus & suffix P PROFIBUS PA protocol.

Manufactured by

BEKA associates Ltd, Old Charlton Road, Hitchin, Herts. UK. SG5 2DA

Council Directives this equipment complies with:

2014/34/EU (ATEX Directive)

Relating to equipment and protective systems intended for use in potentially explosive atmospheres.

Provisions of the Directive fulfilled by the equipment:



Group II Category 1G Ex ia IIC T4 Ga Ta -40°C to +60°C

Notified Body for EU-Type Examination and production

INTERTEK ITALIA SPA 2575 Via Guido Miglioli, 2/A 20063 Cernusco sul Naviglio (MI) Italy

EU-Type Examination Certificate

ITS04ATEX22779/1X dated 23/01/2012.

Standards used:

IEC 60079-0:2011; IEC 60079-11:2011 and IEC 60079-26:2006
Compliant with EN IEC 60079-0:2018 and EN 60079-11:2012

2014/30/EU (EMC Directive)

Standards used:

EN 61326-1:2021

2011/65/EU (RoHS Directive) relating to hazardous substances in electronic and electrical equipment.

2015/863/EU additional substances added by amending Annex II to Directive 2011/65/EU as regards the list of restricted substances.

 mark first affixed in 2004

Authorised Signatory:

Issue 14

17th August 2021

Issue 15

19 Jan 2023



Olivier Lebreton CEng MIET
Managing Director

BEKA
associates

BEKA associates Ltd. Old Charlton Road, Hitchin, SG5 2DA UK
Telephone +44 (0) 1462 438301 Fax +44 (0) 1462 453971
e-mail sales@beka.co.uk www.beka.co.uk