

BEKA field mounting instruments are housed in two types of enclosure. Instruments with a 'C' suffix e.g. BA374C are in a 124 x 122 mm GRP or aluminium enclosure. Instruments with a 'D' suffix e.g. BA304D are in a 212 x 141mm GRP enclosure incorporating a separate terminal compartment.

Scale and Tag Marking

Instruments with a 'D' suffix, apart from serial text displays, fieldbus displays and batch controllers, all have an escutcheon around the display which will accommodate scale and tag marking. If requested the instrument can be supplied with the escutcheon thermally printed to show units of measurement, tag number or applicational information.

For customers preferring traditional labeling, all 'D' instruments can be supplied with a custom laser etched stainless steel plate fitted to the front of the captive terminal cover.

Each plate can accommodate:

1 row of 10 alphanumeric characters 10mm high

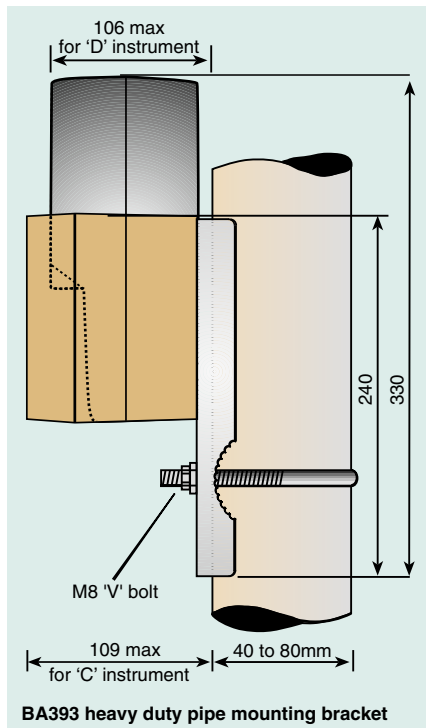
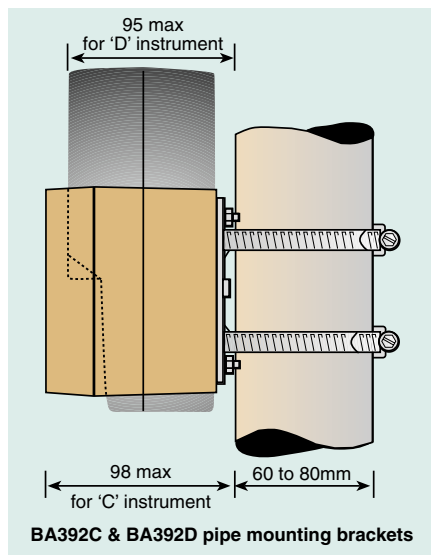
or 2 rows each of 15 alphanumeric characters 7mm high

or 3 rows each of 24 alphanumeric characters 5mm high

Field instruments with a 'C' suffix are supplied with removable blank stainless steel plates above and below the display. If requested these plates can be laser etched to show units of measurement or applicational information.

Each plate can accommodate:

1 row of 9 alphanumeric characters 10mm high



or 1 row of 13 alphanumeric characters 7mm high

or 2 rows each of 18 alphanumeric characters 5mm high

Pipe mounting kits

These kits enable both 'C' and 'D' field mounting instruments to be mounted onto any vertical or horizontal pipe.

BA392C Stainless steel bracket secured by two stainless steel worm drive hose clips for 60 to 80mm **outside diameter** vertical or horizontal pipe; mounts any 'C' field instrument. Usually suitable for clamping to a 2 inch internal diameter metal pipe.

BA392D Stainless steel bracket secured by two stainless steel worm drive hose clips for 60 to 80mm **outside diameter** vertical or horizontal pipe; mounts any 'D' field instrument. Usually suitable for clamping to a 2 inch internal diameter metal pipe.

BA393 Heavy duty stainless steel pipe mounting bracket using a single 'V' bolt. Will clamp to any vertical or horizontal pipe with an outside diameter between 40 and 80mm. Will support 'C' and 'D' field mounting instruments and the BExS110D, BExBG05D and BExCS110-05D flameproof sounders and beacons.

Panel mounting kit for 'C' instruments

The BA394 enables a 'C' field mounting instrument to be mounted into a panel aperture.

Accessories

For field mounting instruments

BA304C	BA304D
BA304NC	BA304ND
BA324C	BA324D
BA324ND	BA334D
BA334ND	BA344D
BA354D	BA354ND
BA364D	BA364ND
BA374C	BA374NC

BA414DF	BA414NDF
BA454D	BA484D
BA484DF	

BA504D	BA524D
BA534D	BA544D
BA554D	BA574C

BA614DF	BA654D
BA684DF	BA684D

BEKA

associates

BEKA associates Ltd. Old Charlton Rd.
Hitchin, Hertfordshire, SG5 2DA, U.K.
Tel. (01462) 438301 Fax (01462) 453971
e-mail sales@beka.co.uk www.beka.co.uk

Accessories

For panel mounting Instruments

A70 **A75**
A80 **A85**

BA307C **BA308C**
BA326C **BA327C**
BA328C **BA338C**
BA358C **BA369**
BA368C **BA378C**

BA405C **BA418CF**
BA458C **BA488C**
BA488CF

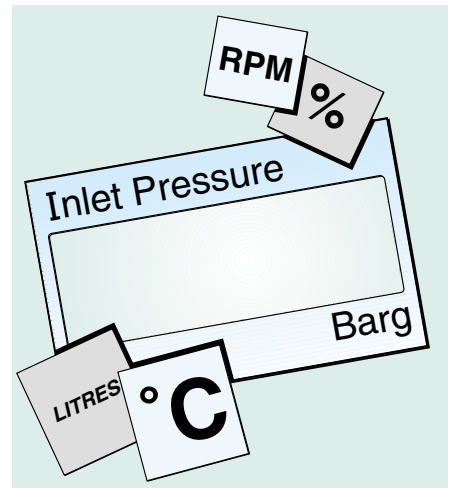
BA505C **BA507C**
BA508C **BA526C**
BA527C **BA528C**
BA538C **BA558C**
BA578C

BA618CF **BA658C**
BA688C **BA688CF**

Scale cards

All panel mounting instruments, except serial text displays, fieldbus displays, batch controllers and the BA369 battery powered clock, can be supplied with a typeset scale card showing the units of measurement e.g. °C, mBAR or L/min. If not specified at the time of ordering a blank card will be fitted.

In addition to a scale card the BA326C and BA526C combined analogue and digital indicators can be supplied with an analogue scale. Please specify the required graduations and units.



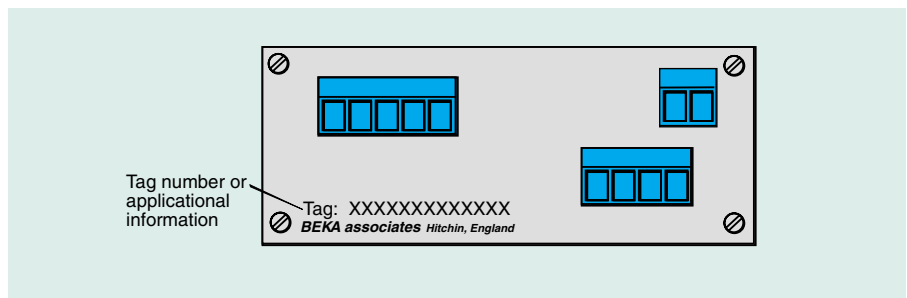
Panel meters A70, A75, A80 and A85 are supplied with a pre-printed set of scale labels containing most common units of measurements.

See list of recommended symbols on page 178.

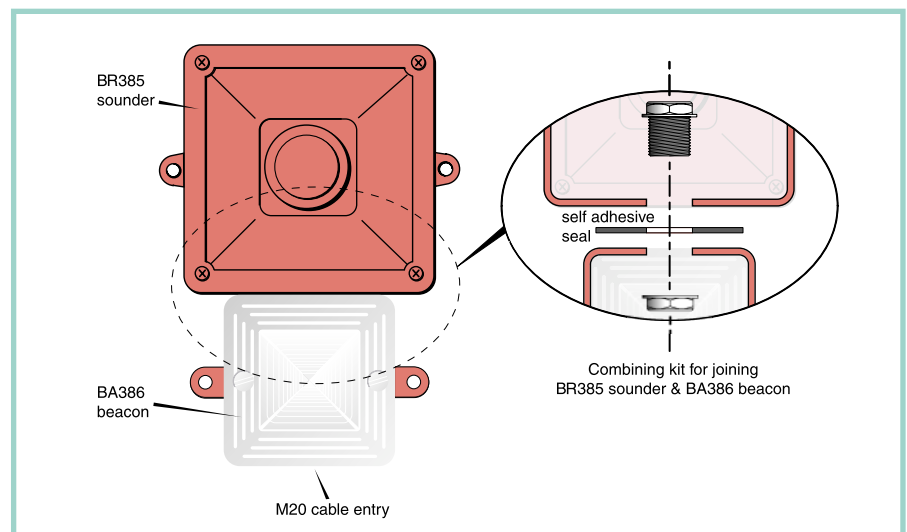
Tag number or applicational information

All panel mounting instruments can be supplied with a customer specified thermally printed tag label which can accommodate up to:

- 1 row of 16 alphanumeric characters 2.7mm high
- or 2 rows of 22 alphanumeric characters 2mm high



Combining kit for joining BR385 sounder & BA386 beacon



HOW TO ORDER

Please specify	
Scale and tag plates	Legend required
Scale cards	Legend required
Tag label	Legend required
Pipe & panel mounting kits	Model number
Sounder & beacon combining kit.	Supplied free of charge on request when BR385 & BA386 are ordered at the same time.